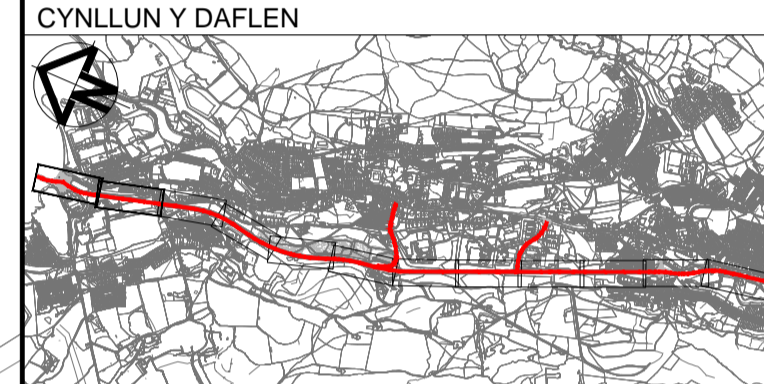
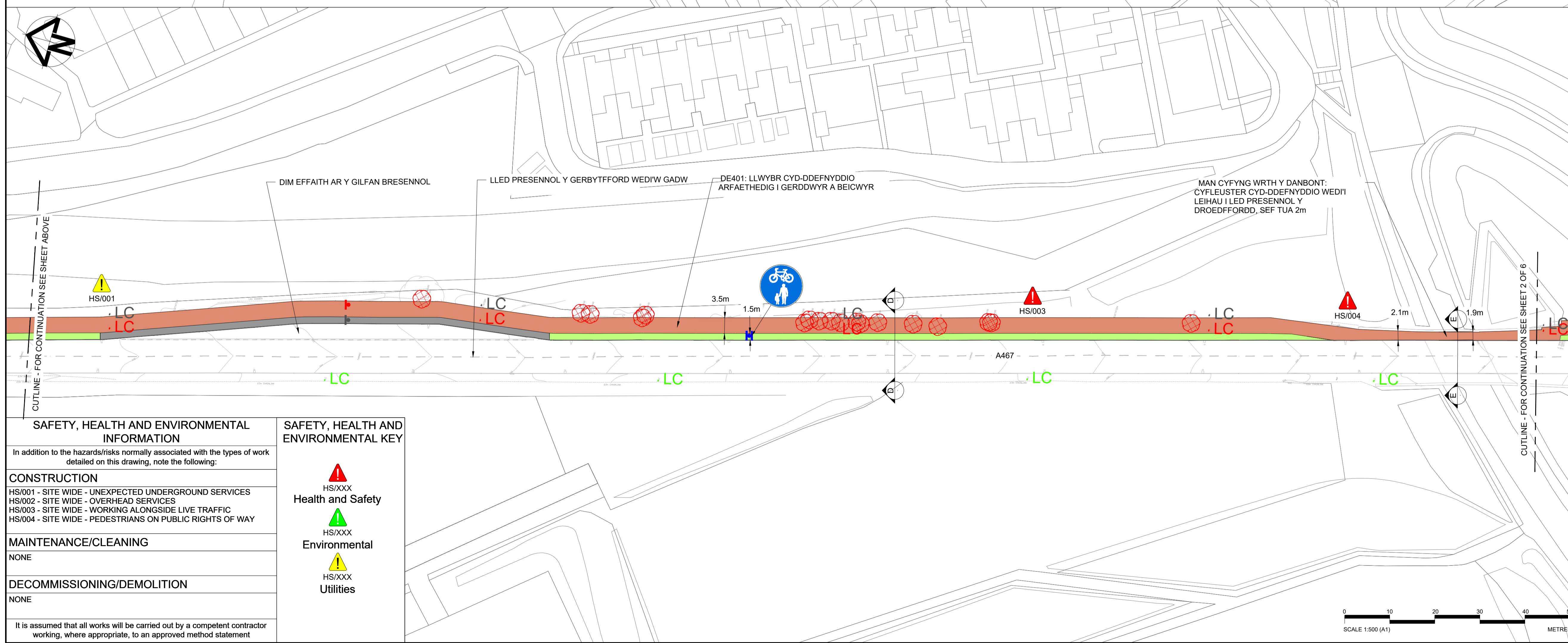


- NODIADAU:**
- MAE'R HOLL DDIMENSIYNAU MEWN METRAU ONI NODIR YN WAHANOL
 - PEIDIWCH A LLUNIO GRADDFA O'R LLUNIAID HWN
 - MAE'R WYBODAETH AR Y LLUNIAID HWN YN DDANGOSOL AC NI DDYLIU EI DEFNYDDIO AT DDIBENION ADEILADU
 - DYLI'D DARLLEN Y LLUNIAID AR Y CYD A LLUNIAUDAU TRAWSTORIAID , 30227098-ARC-GEN-ZZ-DR-HE-00009-00010

- ALLWEDD:**
- DE401 - LLWYBR CYD-DDEFNYDDIO I GERDDWYR A BEICWYR
 - DE313 - LLWYBR BEICIAU
 - DE101 - TROEDFFORDD
 - LLAIN GLUSTOGI (LLAIN GALED)
 - PALMANT BOTYMOG RHIB
 - PALMANT BOTYMOG POTHELL
 - LLAIN GLUSTOGI (LLAIN FEDDAL)
 - ARWYDD ARFAETHEDIG
 - ARWYDD PRESENNOL I'W GADW
 - ARWYDD PRESENNOL I'W ADLEOLI / TYNNU
 - ARWYDD WEDI'Y ADLEOLI
 - GOLOFN OLEUO BRESENNOL I'W CHADW
 - GOLOFN OLEUO BRESENNOL I'W HADLEOLI
 - COLOFN OLEUO WEDI'Y HADLEOLI
 - CELFI STRYD ERAILL I'W SYMUD / ADLEOLI
 - CWRB PRESENNOL
 - CWRB ISEL ARFAETHEDIG
 - CWRB TRWYN TARW ARFAETHEDIG
 - CWRB HB2 ARFAETHEDIG
 - COEDEN I'W CHADW
 - COEDEN I'W THYNNU



Rev	Date	Description	Prod	Chk	Rev	App
P01	07/11/24	FIRST ISSUE - PUBLIC CONSULTATION	BH	RE	JP	EF



Rev	Date	Description	Prod	Chk	Rev	App
P01	07/11/24	FIRST ISSUE - PUBLIC CONSULTATION	BH	RE	JP	EF

Blaenau Gwent
County Borough Council

Project:
Abertillery to Brynmawr Active Travel

Site: _____ Client: _____
Blaenau Gwent County Borough Council
www.blaenau-gwent.gov.uk

ARCADIS

Registered office: 80 Fenchurch Street, London EC3M 4BY
Coordinating office: 80 Fenchurch Street, London EC3M 4BY
Tel: 44 (0)20 7812 2000
www.arcadis.com © Copyright reserved

ABERTILLY TO BRYNMAWR ACTIVE TRAVEL - A467 GENERAL ARRANGEMENT SHEET 1 OF 6

Designed	Produced	Checked	Reviewed	Approved	Design Stage	Original Size	Status Code	Status Description
B.Hagley	B.Hagley	R.Ellis	J.Phillips	E.Findlay	Preliminary Design	A1	S3	Suitable for Review and Comment
06/11/24	06/11/24	07/11/24	07/11/24	07/11/24		OS	1:500	Public
						AOD	30227098	30227098 - ARC - GEN - ZZ - DR - HE - 00001

SAFETY, HEALTH AND ENVIRONMENTAL INFORMATION

In addition to the hazards/risks normally associated with the types of work detailed on this drawing, note the following:

CONSTRUCTION

- HS/001 - SITE WIDE - UNEXPECTED UNDERGROUND SERVICES
- HS/002 - SITE WIDE - OVERHEAD SERVICES
- HS/003 - SITE WIDE - WORKING ALONGSIDE LIVE TRAFFIC
- HS/004 - SITE WIDE - PEDESTRIANS ON PUBLIC RIGHTS OF WAY

MAINTENANCE/CLEANING

NONE

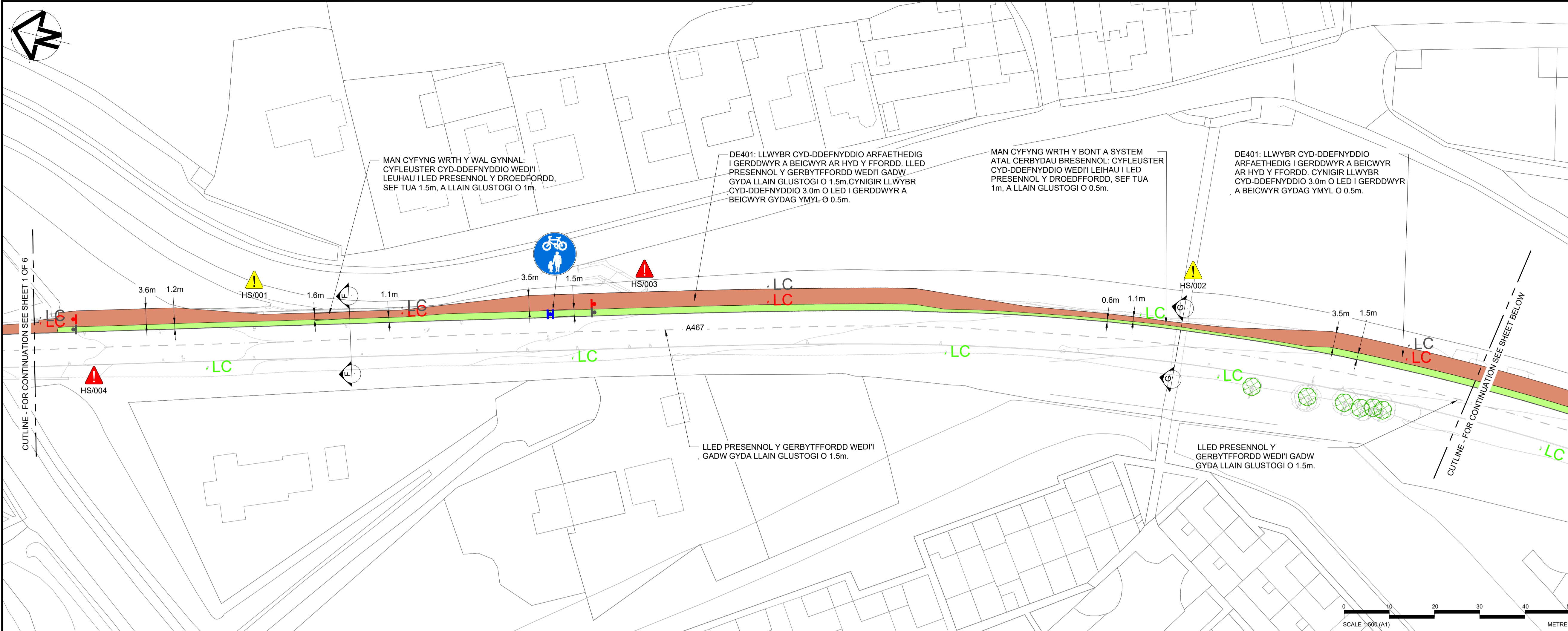
DECOMMISSIONING/DEMOLITION

NONE

It is assumed that all works will be carried out by a competent contractor working, where appropriate, to an approved method statement

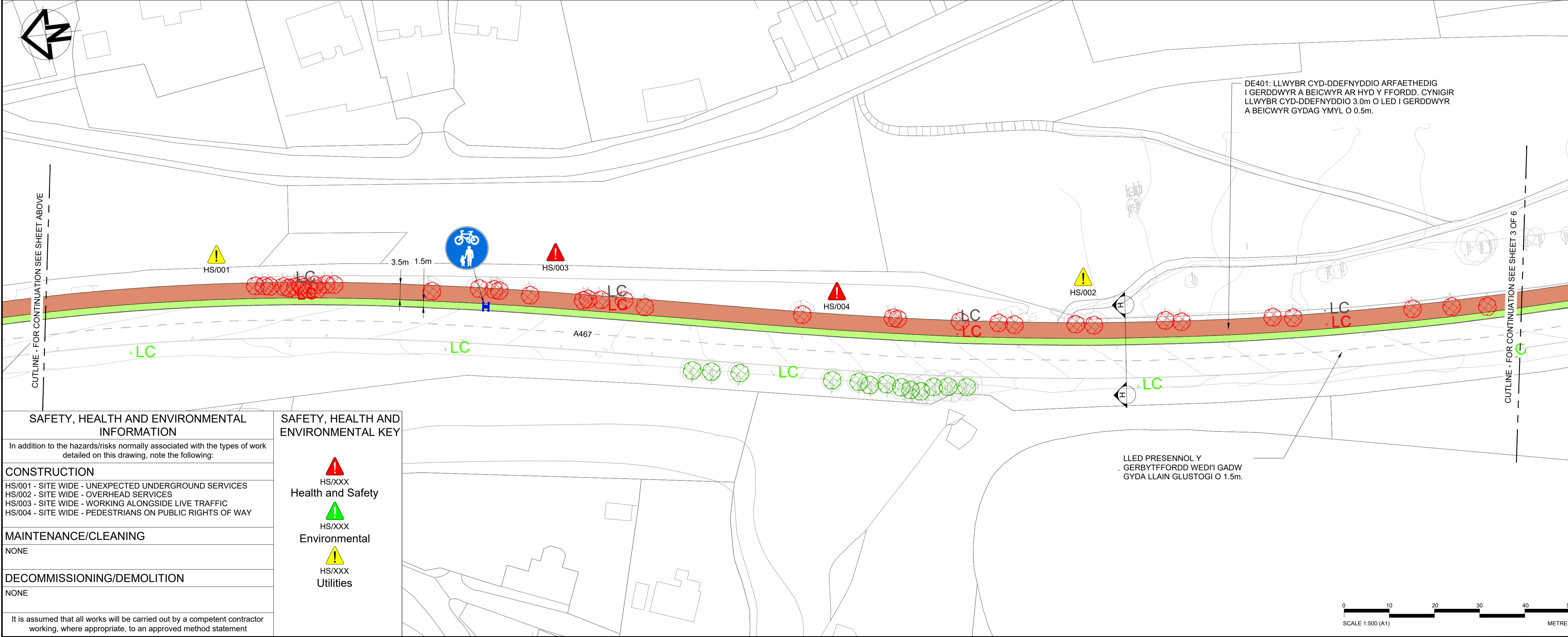
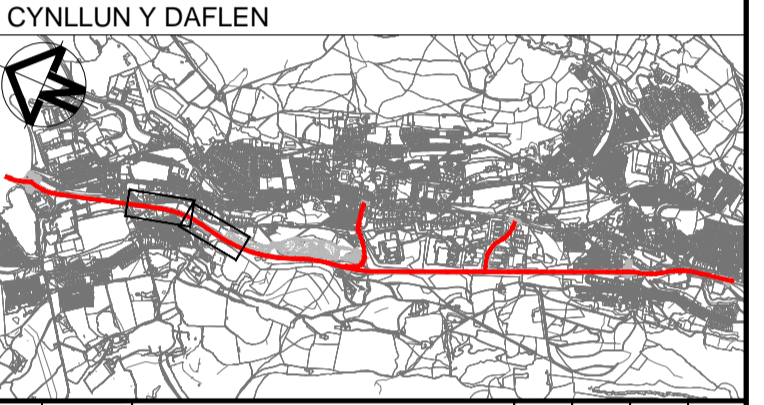
SAFETY, HEALTH AND ENVIRONMENTAL KEY

- Health and Safety
- Environmental
- Utilities



- NODIADAU:
- MAE'R HOLL DDIMENSIYNAU MEWN METRAU ONI NODIR YN WAHANOL
 - PEIDIWCH A LLUNIO GRADDFA O'R LLUNIAD HWN. MAE'R WYBODAETH AR Y LLUNIAD HWN YN DDANGOSOL AC NI DDYLLID EI DEFNYDDIO AT DDIBENION ADEILADU
 - DYLLID DARLLEN Y LLUNIAD AR Y CYD A LLUNIADAU TRAWSTORIAD
 - 30227098-ARC-GEN-ZZ-DR-HE-00009-00010

- ALLWEDD:
- DE401 - LLWYBR CYD-DDEFNYDDIO I GERDDWYR A BEICWYR
 - DE313 - LLWYBR BEICIAU
 - DE101 - TROEDFFORDD
 - LLAIN GLUSTOGI (LLAIN GALED)
 - PALMANT BOTYMOG RHIB
 - PALMANT BOTYMOG POTHELL
 - LLAIN GLUSTOGI (LLAIN FEDDAL)
 - ARWYDD ARFAETHEDIG
 - ARWYDD PRESENNOL IW GADW
 - ARWYDD PRESENNOL IW ADLEOLI / TYNNU
 - ARWYDD WED'I ADLEOLI
 - GOLOFN OLEUO BRESENNOL IW CHADW
 - GOLOFN OLEUO BRESENNOL IW HADLEOLI
 - COLOFN OLEUO WED'I HADLEOLI
 - CELFI STRYD ERAILL IW SYMUD / ADLEOLI
 - CWRB PRESENNOL
 - CWRB ISEL ARFAETHEDIG
 - CWRB TRWYN TARW ARFAETHEDIG
 - CWRB HB2 ARFAETHEDIG
 - COEDEN IW CHADW
 - COEDEN IW THYNNU



Rev	Date	Description	Prod	Chk	Rev	App
P01	07/11/24	FIRST ISSUE - PUBLIC CONSULTATION	BH	RE	JP	EF

Blaenau Gwent
County Borough Council

Project: **Abertillery to Brynmawr Active Travel**

Site: _____ Client: **Blaenau Gwent County Borough Council**
www.blaenau-gwent.gov.uk

ARCADIS

Registered office: 80 Fenchurch Street, London EC3M 4BY
Coordinating office: 80 Fenchurch Street, London EC3M 4BY
Tel: 44 (0)20 7812 2000
www.arcadis.com © Copyright reserved

ABERTILLERY TO BRYNMAWR
ACTIVE TRAVEL - A467
GENERAL ARRANGEMENT
SHEET 2 OF 6

Designed: B. Hagley	Signed: Digitally Signed	Date: 06/11/24
Produced: B. Hagley	Signed: Digitally Signed	Date: 06/11/24
Checked: R. Ellis	Signed: Digitally Signed	Date: 07/11/24
Reviewed: J. Phillips	Signed: Digitally Signed	Date: 07/11/24
Approved: E. Findlay	Signed: Digitally Signed	Date: 07/11/24
Design Stage: Preliminary Design	Grid: OS	Datum: AOD
Original Size: A1	Scale: 1:500	Project Number: 30227098
Status Code: S3	Suitable for Review and Comment	
Status Description: Public	Drawing Number: 30227098 - ARC - GEN - ZZ - DR - HE - 00002	Revision: P01



SAFETY, HEALTH AND ENVIRONMENTAL INFORMATION

In addition to the hazards/risks normally associated with the types of work detailed on this drawing, note the following:

CONSTRUCTION

- HS/001 - SITE WIDE - UNEXPECTED UNDERGROUND SERVICES
- HS/002 - SITE WIDE - OVERHEAD SERVICES
- HS/003 - SITE WIDE - WORKING ALONGSIDE LIVE TRAFFIC
- HS/004 - SITE WIDE - PEDESTRIANS ON PUBLIC RIGHTS OF WAY

MAINTENANCE/CLEANING

NONE

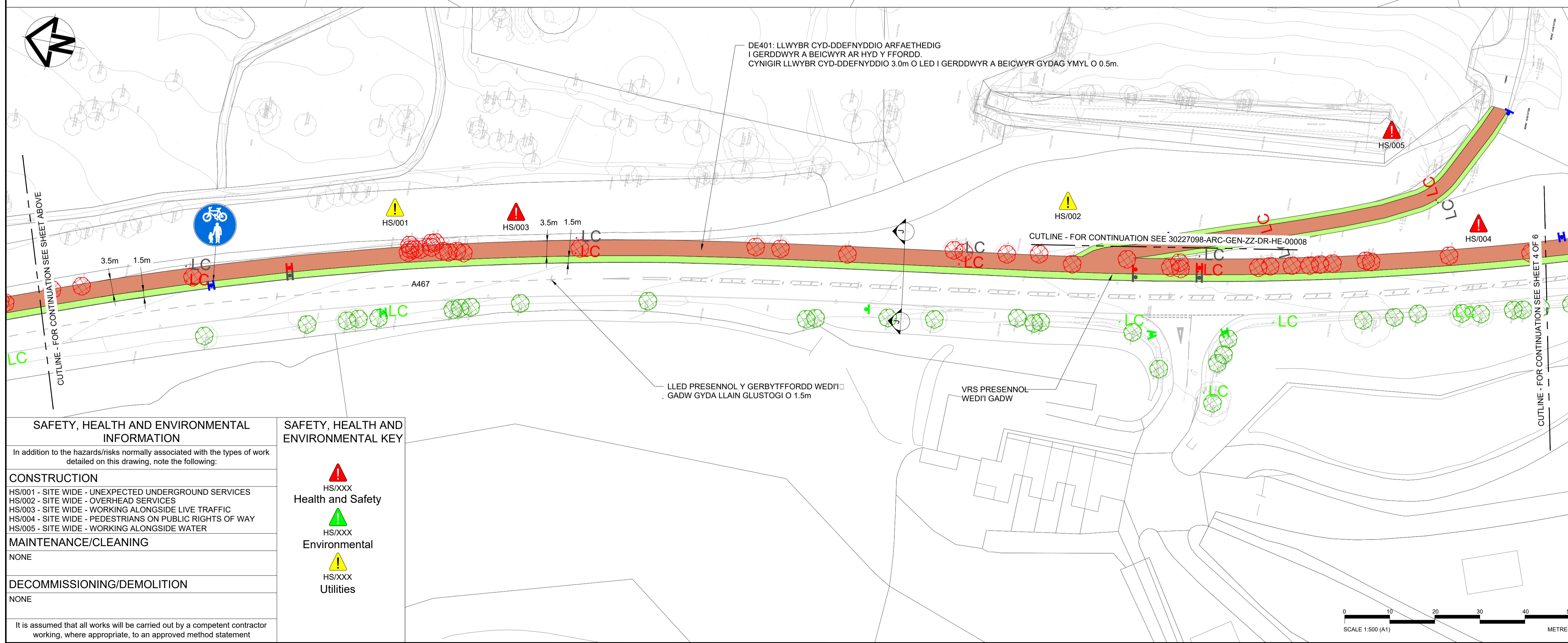
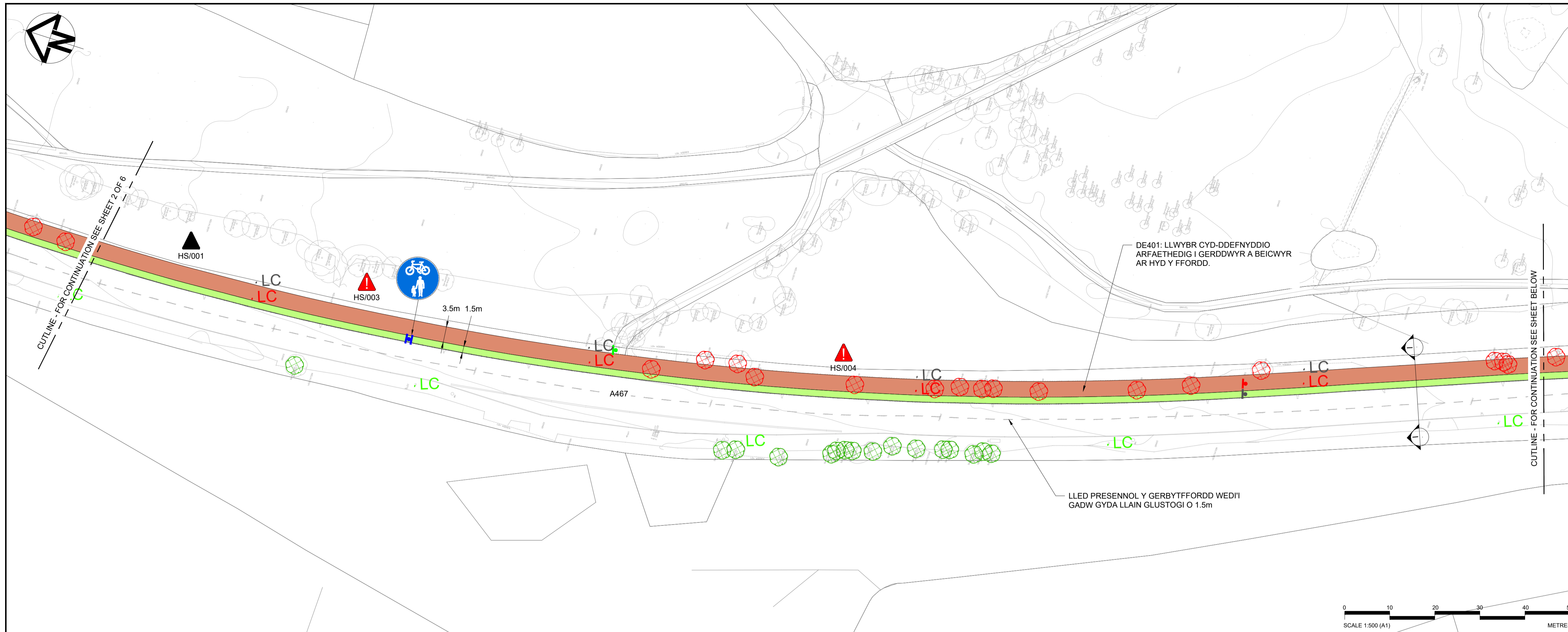
DECOMMISSIONING/DEMOLITION

NONE

It is assumed that all works will be carried out by a competent contractor working, where appropriate, to an approved method statement

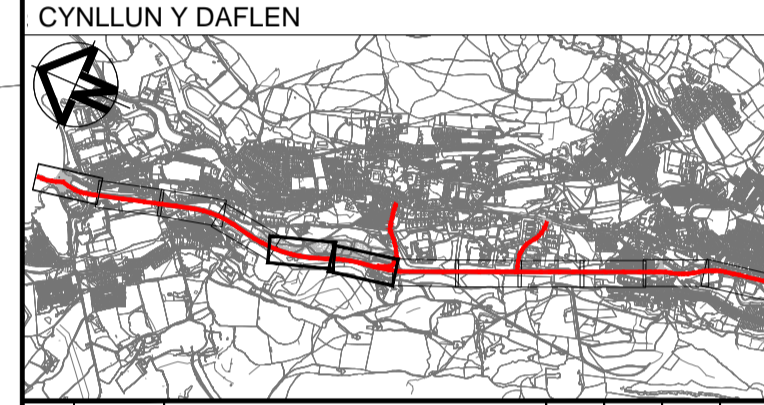
SAFETY, HEALTH AND ENVIRONMENTAL KEY

- Health and Safety
- Environmental
- Utilities



NODIADAU:
 1. MAE'R HOLL DDIMENSIYNAU MEWN METRAU ONI NODIR YN WAHANOL
 2. PEIDIWCH A LLUNIO GRADDDA O'R LLUNIAID HWN YN MAE'R WYBODAETH AR Y LLUNIAID HWN YN DDANGOSOL AC NI DDYLID EI DEFNYDDIO AT DDIBENION ADEILADU
 3. DYLLID DARLLEN Y LLUNIAID AR Y CYD A LLUNIAIDAU TRAWSTORIAID
 30227098-ARC-GEN-ZZ-DR-HE-00009-00010

- ALLWEDD:
- DE401 - LLWYBR CYD-DDEFNYDDIO I GERDDWYR A BEICWYR
 - DE313 - LLWYBR BEICIAU
 - DE101 - TROEDFFORDD
 - LLAIN GLUSTOGI (LLAIN GALED)
 - PALMANT BOTYMOG RHIB
 - PALMANT BOTYMOG POTHELL
 - LLAIN GLUSTOGI (LLAIN FEDDAL)
 - ARWYDD ARFAETHEDIG
 - ARWYDD PRESENNOL IW GADW
 - ARWYDD PRESENNOL IW ADLEOLI / TYNNU
 - ARWYDD WEDI' ADLEOLI
 - GOLOFN OLEUO BRESENNOL IW CHADW
 - GOLOFN OLEUO BRESENNOL IW HADLEOLI
 - GOLOFN OLEUO WEDI' HADLEOLI
 - CELFI STRYD ERAILL IW SYMUD / ADLEOLI
 - CWRB PRESENNOL
 - CWRB ISEL ARFAETHEDIG
 - CWRB TRWYN TARW ARFAETHEDIG
 - CWRB HB2 ARFAETHEDIG
 - COEDEN IW CHADW
 - COEDEN IW THYNNU



Rev	Date	Description	Prod.	Chk.	Rev.	App.
P01	07/11/24	FIRST ISSUE - PUBLIC CONSULTATION	BH	RE	JP	EF

Blaenau Gwent
 County Borough Council

Project:
Abertillery to Brynmawr Active Travel

Site: _____ Client: **Blaenau Gwent County Borough Council**
www.blaenau-gwent.gov.uk

ARCADIS

Registered office: 80 Fenchurch Street, London EC3M 4BY
 Coordinating office: 80 Fenchurch Street, London EC3M 4BY
 Tel: 44 (0)20 7812 2000
www.arcadis.com © Copyright reserved

SAFETY, HEALTH AND ENVIRONMENTAL INFORMATION

In addition to the hazards/risks normally associated with the types of work detailed on this drawing, note the following:

CONSTRUCTION

- HS/001 - SITE WIDE - UNEXPECTED UNDERGROUND SERVICES
- HS/002 - SITE WIDE - OVERHEAD SERVICES
- HS/003 - SITE WIDE - WORKING ALONGSIDE LIVE TRAFFIC
- HS/004 - SITE WIDE - PEDESTRIANS ON PUBLIC RIGHTS OF WAY
- HS/005 - SITE WIDE - WORKING ALONGSIDE WATER

MAINTENANCE/CLEANING

NONE

DECOMMISSIONING/DEMOLITION

NONE

It is assumed that all works will be carried out by a competent contractor working, where appropriate, to an approved method statement

- SAFETY, HEALTH AND ENVIRONMENTAL KEY**
- HS/XXX Health and Safety
 - HS/XXX Environmental
 - HS/XXX Utilities

ABERTILLERY TO BRYNMAWR ACTIVE TRAVEL - A467 GENERAL ARRANGEMENT SHEET 3 OF 6

Designed	Signed	Date
B. Hagley	Digitally Signed	06/11/24
B. Hagley	Digitally Signed	06/11/24
R. Ellis	Digitally Signed	07/11/24
J. Phillips	Digitally Signed	07/11/24
E. Findlay	Digitally Signed	07/11/24

Design Stage: Preliminary Design

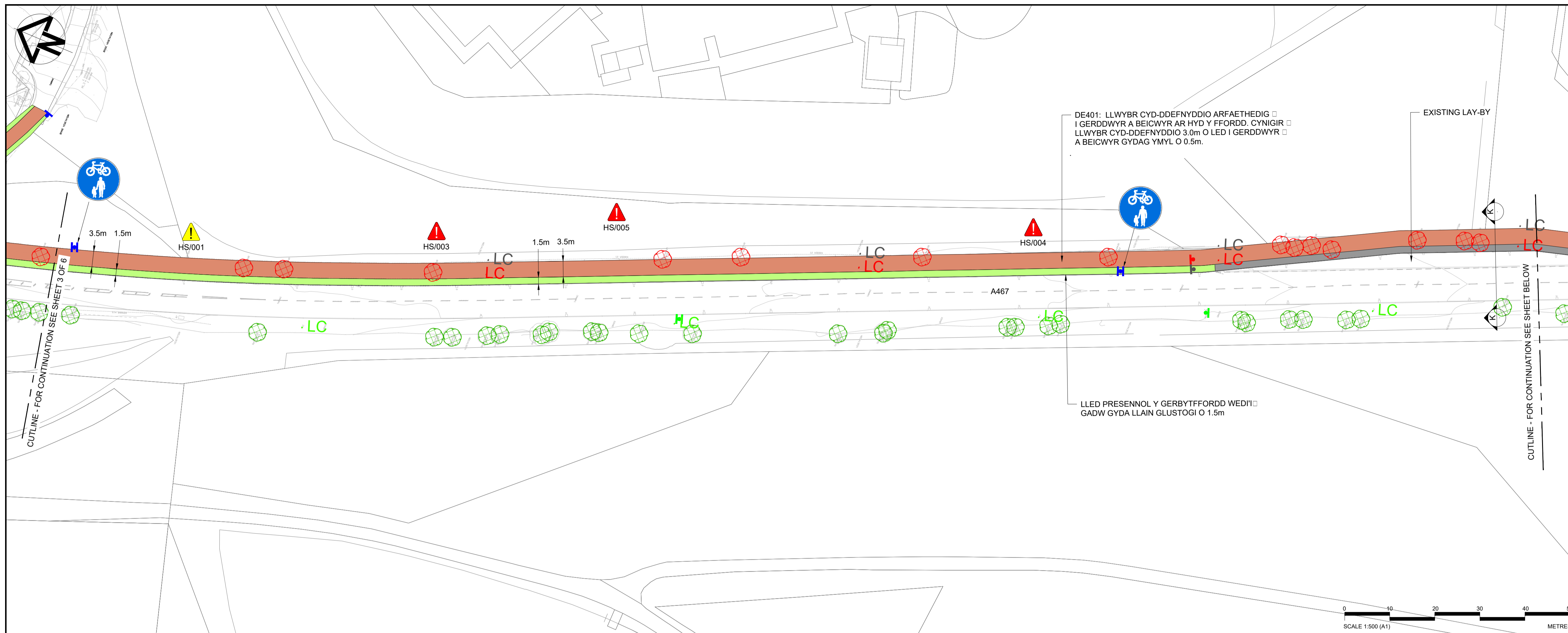
Original Size: A1 Grid: OS Datum: AOD

Status Code: S3 Scale: 1:500 Project Number: 30227098

Suitable for Review and Comment

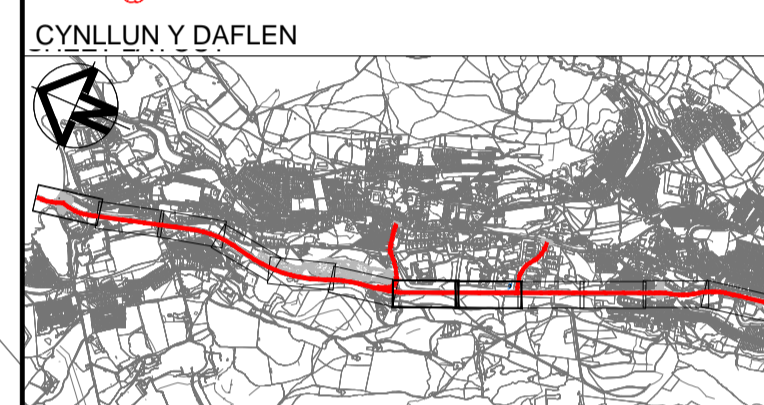
Security Classification: Public

Drawing Number: 30227098 - ARC - GEN - ZZ - DR - HE - 00003 P01



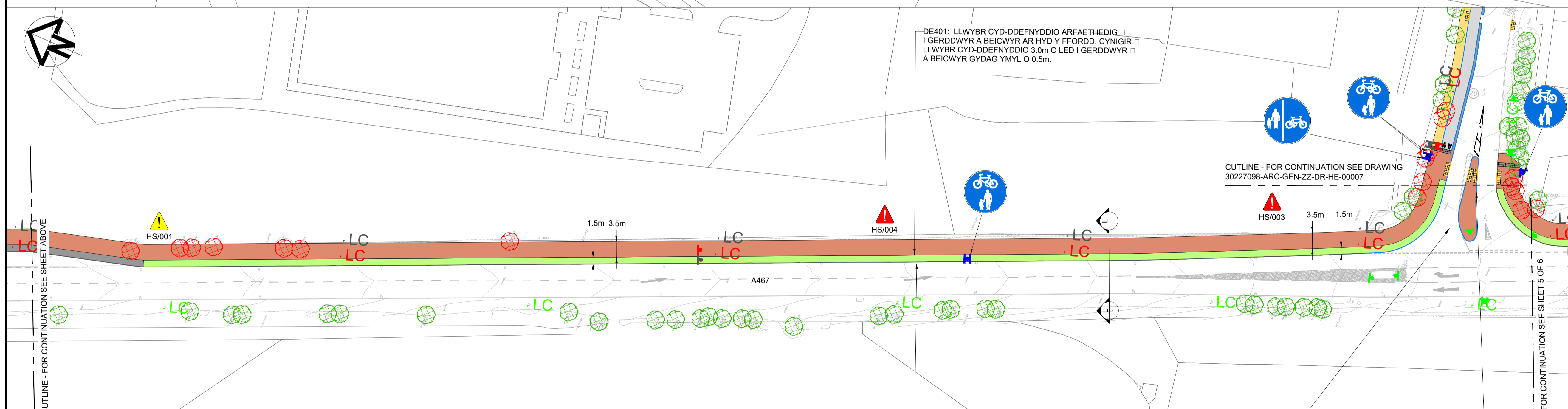
- NODIADAU:
- MAER HOLL DDIMENSIYNAU MEWN METRAU ONI NODIR YN WAHANOL.
 - PEIDIWCH A LLUNIO GRADDFA O'R LLUNIAD HWN.
 - MAER WYBODAETH AR Y LLUNIAD HWN YN DDANGOSOL AC NI DDYLID EI DEFNYDDIO AT DDIBENION ADEILADU.
 - DYLID DARLLEN Y LLUNIAD AR Y CYD A LLUNIADAU TRAWSTORIAD ,30227098-ARC-GEN-ZZ-DR-HE-00009-00010

- ALLWEDD:
- DE401 - LLWYBR CYD-DDEFNYDDIO I GERDDWYR A BEICWYR
 - DE313 - LLWYBR BEICIAU
 - DE101 - TROEDFFORDD
 - LLAIN GLUSTOGI (LLAIN GALED)
 - PALMANT BOTYMOG RHIB
 - PALMANT BOTYMOG POTHELL
 - LLAIN GLUSTOGI (LLAIN FEDDAL)
 - ARWYDD ARFAETHEDIG
 - ARWYDD PRESENNOL IW GADW
 - ARWYDD PRESENNOL IW ADLEOLI / TYNNU
 - ARWYDD WEDI'I ADLEOLI
 - GOLOFN OLEUO BRESENNOL IW CHADW
 - GOLOFN OLEUO BRESENNOL IW HADLEOLI
 - GOLOFN OLEUO WEDI'I HADLEOLI
 - CELFI STRYD ERAILL IW SYMUD / ADLEOLI
 - CWRB PRESENNOL
 - CWRB ISEL ARFAETHEDIG
 - CWRB TRWYN TARW ARFAETHEDIG
 - CWRB HB2 ARFAETHEDIG
 - COEDEN IW CHADW
 - COEDEN IW THYNNU



Rev	Date	Description	Prod.	Chk.	Rev.	JP	EF
P01	07/11/24	FIRST ISSUE - PUBLIC CONSULTATION	BH	RE	JP		EF

SCALE 1:500 (A1) METRES



Blaenau Gwent
County Borough Council

Project:
Abertillery to Brynmawr Active Travel

Site: _____ Client: _____
Blaenau Gwent County Borough Council
www.blaenau-gwent.gov.uk

ARCADIS

Registered office: 80 Fenchurch Street, London EC3M 4BY
Coordinating office: 80 Fenchurch Street, London EC3M 4BY
Tel: 44 (0)20 7812 2000
www.arcadis.com © Copyright reserved

Drawing Title:
ABERTILLERY TO BRYNMAWR ACTIVE TRAVEL - A467 GENERAL ARRANGEMENT SHEET 4 OF 6

Designed	Checked	Reviewed	Approved	Design Stage	Original Size	Grid	Datum
B.Hagley	B.Hagley	J.Phillips	E.Findlay	Preliminary Design	A1	OS	AOD

Status Code: S3 Scale: 1:500 Project Number: 30227098

Suitable for Review and Comment

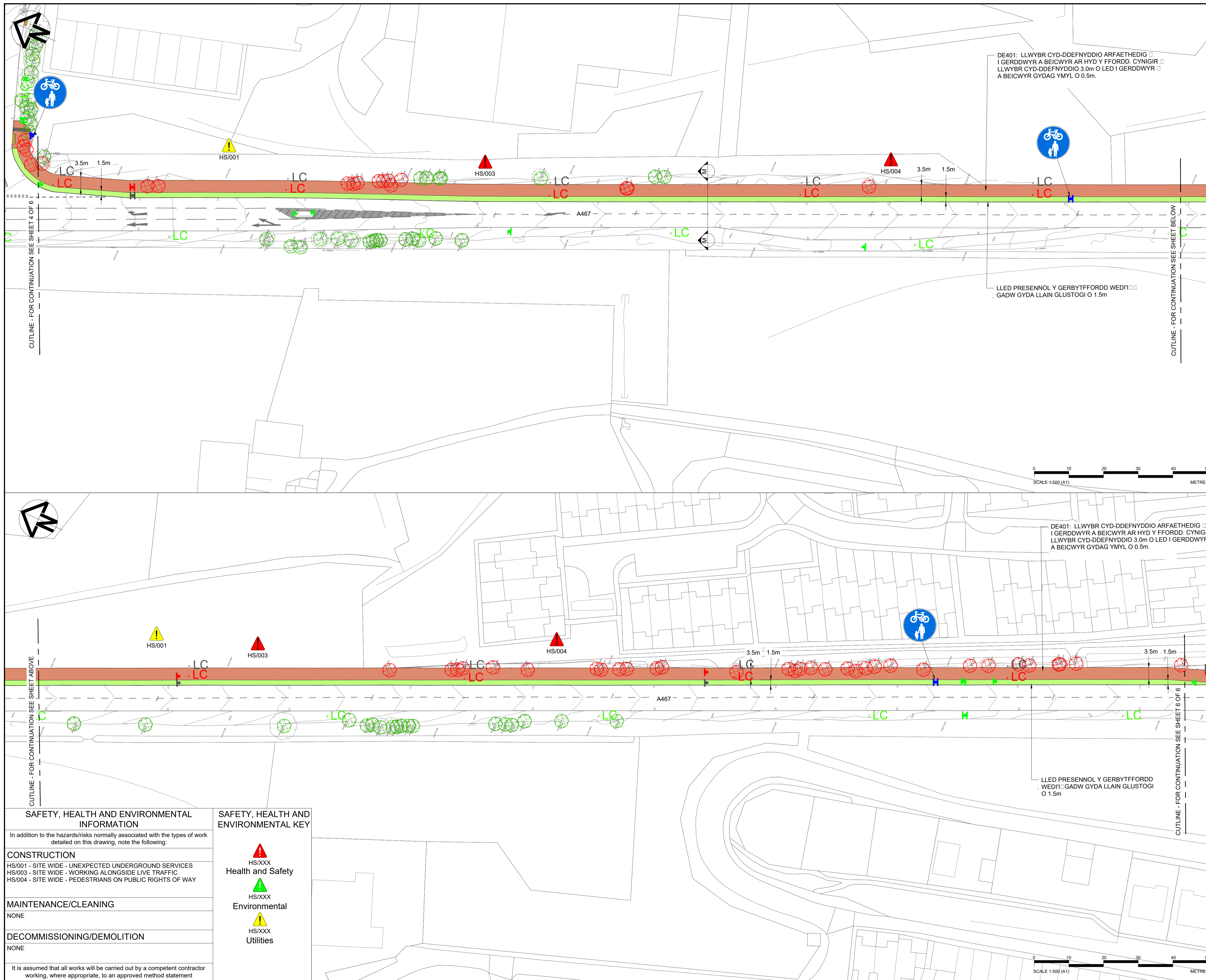
Security Classification: Public

Drawing Number: 30227098 - ARC - GEN - ZZ - DR - HE - 00004

Revision: P01

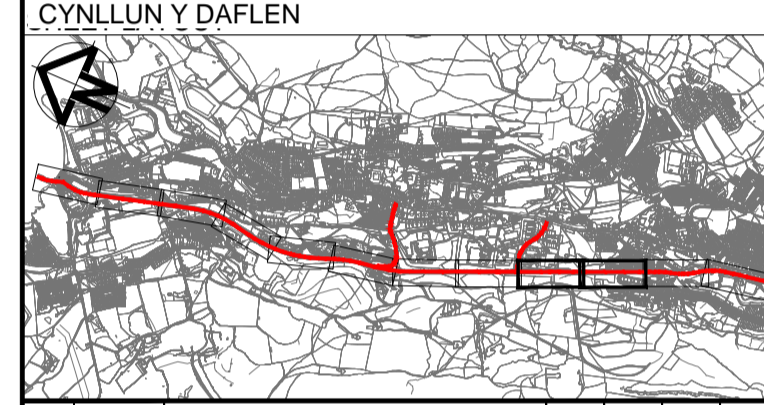
SCALE 1:500 (A1) METRES

SAFETY, HEALTH AND ENVIRONMENTAL INFORMATION	SAFETY, HEALTH AND ENVIRONMENTAL KEY
In addition to the hazards/risks normally associated with the types of work detailed on this drawing, note the following:	
CONSTRUCTION	
HS/001 - SITE WIDE - UNEXPECTED UNDERGROUND SERVICES	HS/XXX Health and Safety
HS/003 - SITE WIDE - WORKING ALONGSIDE LIVE TRAFFIC	HS/XXX Environmental
HS/004 - SITE WIDE - PEDESTRIANS ON PUBLIC RIGHTS OF WAY	HS/XXX Utilities
HS/005 - SITE WIDE - WORKING ALONGSIDE WATER	
MAINTENANCE/CLEANING	
NONE	
DECOMMISSIONING/DEMOLITION	
NONE	
It is assumed that all works will be carried out by a competent contractor working, where appropriate, to an approved method statement	



NODIADAU:
 1. MAER HOLL DDIMENSIYNAU MEWN METRAU ONI NODIR YN WAHANOL.
 2. PEIDIWCH A LLUNIO GRADDDFA O'R LLUNIAD HWN.
 3. MAER WYBODAETH AR Y LLUNIAD HWN YN DDANGOSOL AC NI DDYLID EI DEFNYDDIO AT DDIBENION ADEILADU
 4. DYLLID DARLLEN Y LLUNIAD AR Y CYD A LLUNIADAU TRAWSTORIAID
 30227098-ARC-GEN-ZZ-DR-HE-00009-00010

- ALLWEDD:
- DE401 - LLWYBR CYD-DDEFNYDDIO I GERDDWYR A BEICWYR
 - DE313 - LLWYBR BEICIAU
 - DE101 - TROEDFFORDD
 - LLAIN GLUSTOGI (LLAIN GALED)
 - PALMANT BOTYMOG RHIB
 - PALMANT BOTYMOG POTHELL
 - LLAIN GLUSTOGI (LLAIN FEDDAL)
 - ARWYDD ARFAETHEDIG
 - ARWYDD PRESENNOL IW GADW
 - ARWYDD PRESENNOL IW ADLEOLI / TYNNU
 - ARWYDD WEDI'I ADLEOLI
 - GOLOFN OLEUO BRESENNOL IW CHADW
 - GOLOFN OLEUO BRESENNOL IW HADLEOLI
 - GOLOFN OLEUO WEDI'I HADLEOLI
 - CELFI STRYD ERAILL IW SYMUD / ADLEOLI
 - CWRB PRESENNOL
 - CWRB ISEL ARFAETHEDIG
 - CWRB TRWYN TARW ARFAETHEDIG
 - CWRB HB2 ARFAETHEDIG
 - COEDEN IW CHADW
 - COEDEN IW THYNNU



Rev	Date	Description	Prod.	Chk.	Rev.	JP	EF
P01	07/11/24	FIRST ISSUE - PUBLIC CONSULTATION	BH	RE	JP		EF

Project:	Abertillery to Brynmawr Active Travel						
Site:	Blaenau Gwent County Borough Council						
Client:	www.blaenau-gwent.gov.uk						

Blaenau Gwent
 County Borough Council

Project: Abertillery to Brynmawr Active Travel

Site: _____ Client: Blaenau Gwent County Borough Council
 www.blaenau-gwent.gov.uk

ARCADIS

Registered office: 80 Fenchurch Street, London EC3M 4BY
 Coordinating office: 80 Fenchurch Street, London EC3M 4BY
 Tel: 44 (0)20 7812 2000

www.arcadis.com © Copyright reserved

ABERTILLERY TO BRYNMAWR
 ACTIVE TRAVEL - A467
 GENERAL ARRANGEMENT
 SHEET 5 OF 6

Designed: B.Hagley	Signed: Digitally Signed	Date: 06/11/24
Produced: B.Hagley	Signed: Digitally Signed	Date: 06/11/24
Checked: R.Ellis	Signed: Digitally Signed	Date: 07/11/24
Reviewed: J.Phillips	Signed: Digitally Signed	Date: 07/11/24
Approved: E.Findlay	Signed: Digitally Signed	Date: 07/11/24
Design Stage:	Preliminary Design	
Original Size:	A1	Grid: OS Datum: AOD
Status Code:	S3	Scale: 1:500 Project Number: 30227098
Suitable for Review and Comment		
Public		
Drawing Number:	30227098 - ARC - GEN - ZZ - DR - HE - 00005	Revision: P01

SAFETY, HEALTH AND ENVIRONMENTAL INFORMATION

In addition to the hazards/risks normally associated with the types of work detailed on this drawing, note the following:

CONSTRUCTION
 HS/001 - SITE WIDE - UNEXPECTED UNDERGROUND SERVICES
 HS/003 - SITE WIDE - WORKING ALONGSIDE LIVE TRAFFIC
 HS/004 - SITE WIDE - PEDESTRIANS ON PUBLIC RIGHTS OF WAY

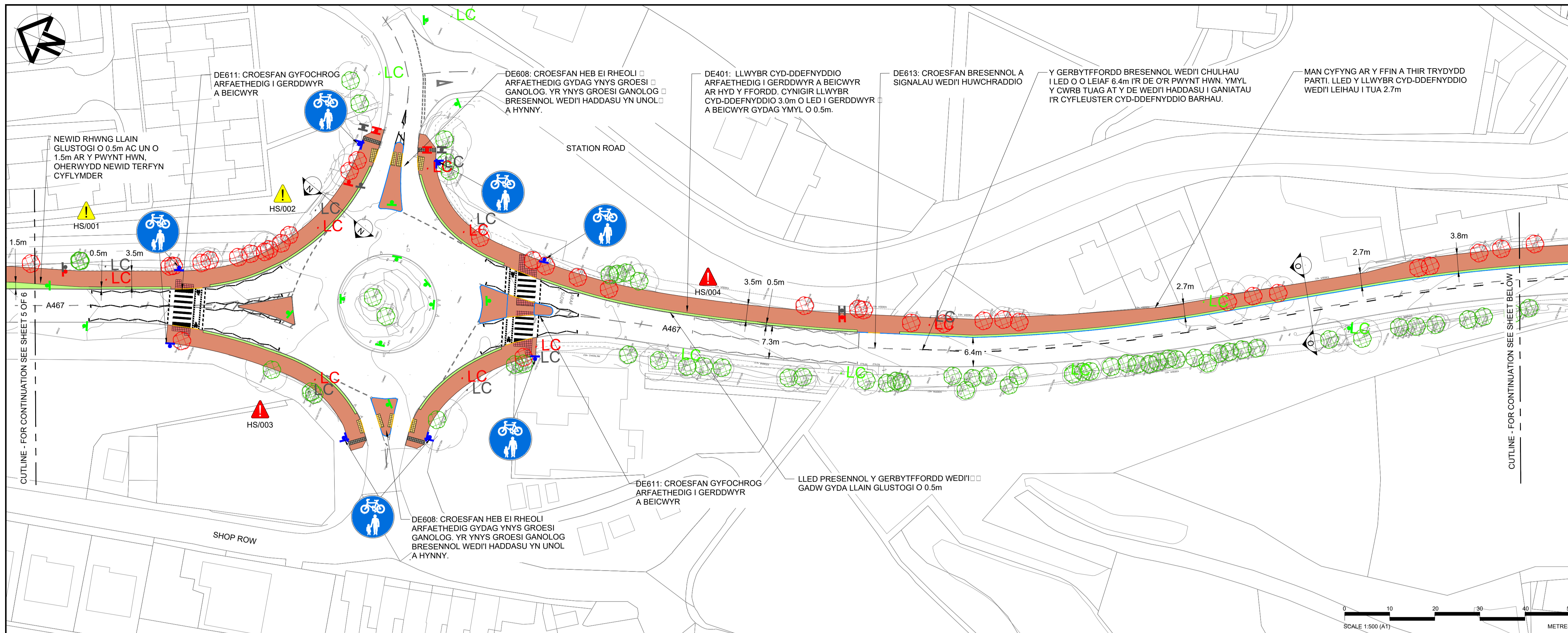
MAINTENANCE/CLEANING
 NONE

DECOMMISSIONING/DEMOLITION
 NONE

It is assumed that all works will be carried out by a competent contractor working, where appropriate, to an approved method statement

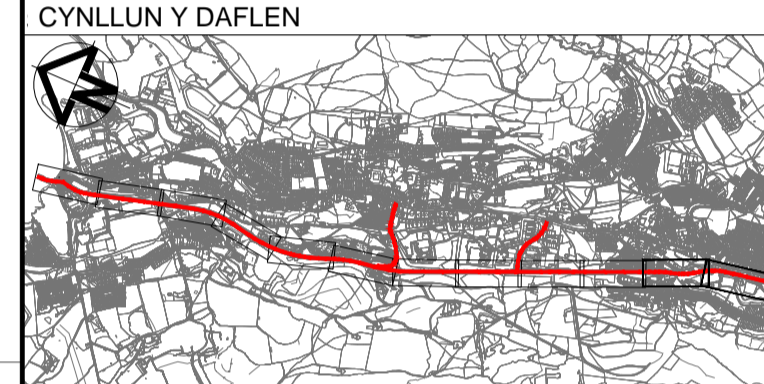
SAFETY, HEALTH AND ENVIRONMENTAL KEY

- HS/XXX Health and Safety
- HS/XXX Environmental
- HS/XXX Utilities

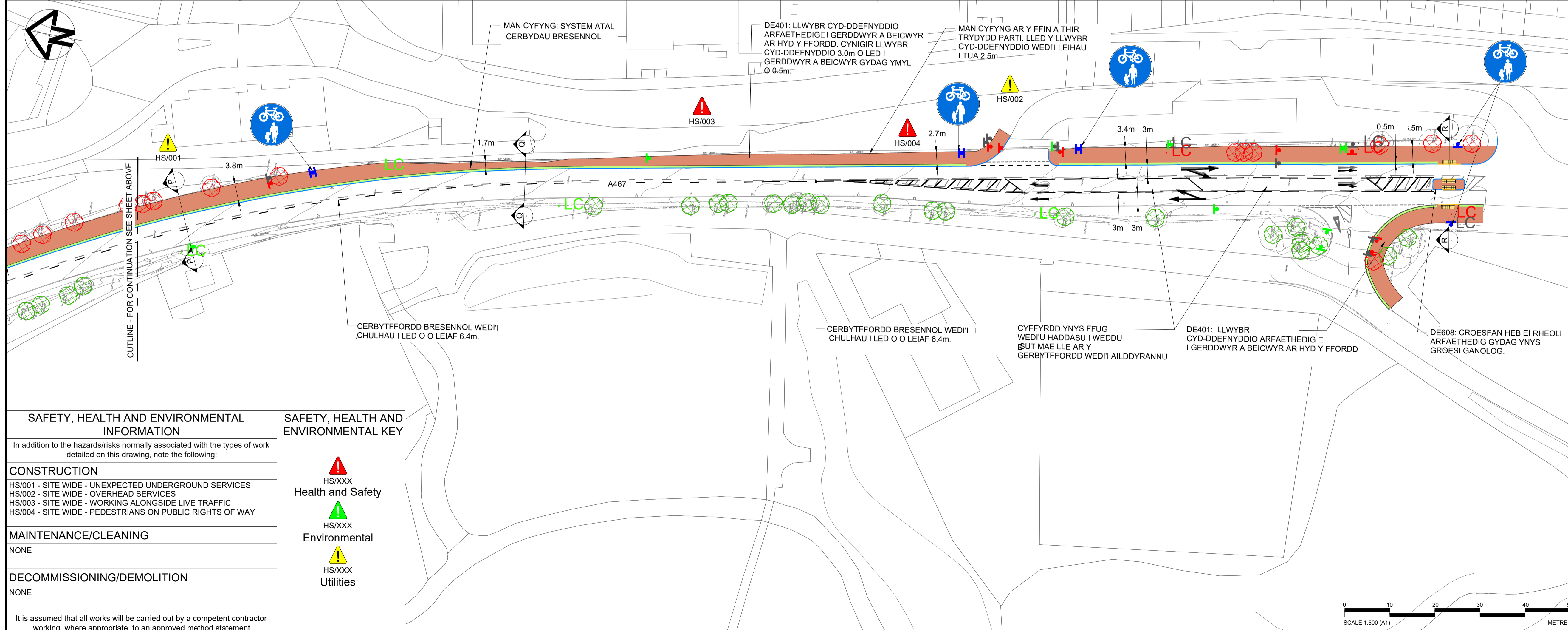
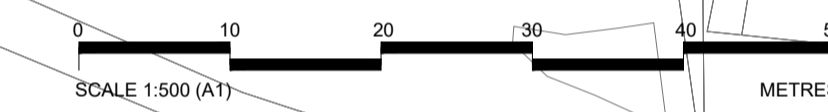


NODIADAU:
 1. MAE'R HOLL DDIMENSIYNAU MEWN METRAU ONI NODIR YN WAHANOL.
 2. PEIDIWCH A LLUNIO GRADDFA O'R LLUNIAD HWN. MAE'R WYBODAETH AR Y LLUNIAD HWN YN DDANGOSOL AC NI DDYLID EI DEFNYDDIO AT DDIBENION ADEILADU.
 3. DYLLID DARLLEN Y LLUNIAD AR Y CYD A LLUNIADAU TRAWSTORIAD
 30227098-ARC-GEN-ZZ-DR-HE-00009-00010

- ALLWEDD:
- DE401 - LLWYBR CYD-DDEFNYDDIO I GERDDWYR A BEICWYR
 - DE13 - LLWYBR BEICIAU
 - DE101 - TROEDFFORDD
 - LLAIN GLUSTOGI (LLAIN GALED)
 - PALMANT BOTYMOG RHIB
 - PALMANT BOTYMOG POTHELL
 - LLAIN GLUSTOGI (LLAIN FEDDAL)
 - ARWYDD ARFAETHEDIG
 - ARWYDD PRESENNOL IW GADW
 - ARWYDD PRESENNOL IW ADLEOLI / TYNNU
 - ARWYDD WEDI'I ADLEOLI
 - GOLOFN OLEUO BRESENNOL IW CHADW
 - GOLOFN OLEUO BRESENNOL IW HADLEOLI
 - GOLOFN OLEUO WEDI'I HADLEOLI
 - CELFI STRYD ERAILL IW SYMUD / ADLEOLI
 - CWRB PRESENNOL
 - CWRB ISEL ARFAETHEDIG
 - CWRB TRWYN TARW ARFAETHEDIG
 - CWRB HB2 ARFAETHEDIG
 - COEDEN IW CHADW
 - COEDEN IW THYNNU



Rev	Date	Description	Prod.	Chk.	JP	EF
P01	07/11/24	FIRST ISSUE - PUBLIC CONSULTATION	BH	RE	JP	EF



Blaenau Gwent
 County Borough of Gwent
 Council

Project:
Abertillery to Brynmawr Active Travel

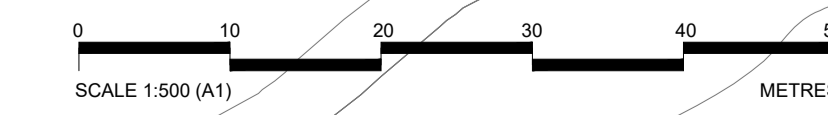
Site: _____ Client: _____
 Blaenau Gwent County Borough Council
 www.blaenau-gwent.gov.uk

ARCADIS

Registered office: 80 Fenchurch Street, London EC3M 4BY
 Coordinating office: 80 Fenchurch Street, London EC3M 4BY
 Tel: 44 (0)20 7812 2000
 www.arcadis.com © Copyright reserved

Drawing Title:
ABERTILLERY TO BRYNMAWR ACTIVE TRAVEL - A467 GENERAL ARRANGEMENT SHEET 6 OF 6

Designed	Checked	Reviewed	Approved	Design Stage	Original Size	Grid	Datum
B. Hagley	B. Hagley	J. Phillips	E. Findlay	Preliminary Design	A1	OS	AOD
06/11/24	06/11/24	07/11/24	07/11/24				
Status Code: S3		Scale: 1:500	Project Number: 30227098	Suitable for Review and Comment			
Security Classification: Public		Drawing Number: 30227098 - ARC - GEN - ZZ - DR - HE - 00006	Revision: P01				



SAFETY, HEALTH AND ENVIRONMENTAL INFORMATION	SAFETY, HEALTH AND ENVIRONMENTAL KEY
In addition to the hazards/risks normally associated with the types of work detailed on this drawing, note the following:	HS/XXX Health and Safety
CONSTRUCTION	HS/XXX Environmental
HS/001 - SITE WIDE - UNEXPECTED UNDERGROUND SERVICES	HS/XXX Utilities
HS/002 - SITE WIDE - OVERHEAD SERVICES	
HS/003 - SITE WIDE - WORKING ALONGSIDE LIVE TRAFFIC	
HS/004 - SITE WIDE - PEDESTRIANS ON PUBLIC RIGHTS OF WAY	
MAINTENANCE/CLEANING	
NONE	
DECOMMISSIONING/DEMOLITION	
NONE	
It is assumed that all works will be carried out by a competent contractor working, where appropriate, to an approved method statement	