

New Development Plan for **Blaenau Gwent** up to 2033



Introduction

This is a summary of the Strategy for the new development plan for Blaenau Gwent Replacement Local Development Plan - (RLDP).

The Strategy document sets out the long term vision for Blaenau Gwent by indicating how much development is needed within the borough and broadly where it is likely to go.

Our current plan has been in place for seven years and will run out in 2021 - so we need to replace it.

Progress so far...

- We reviewed the current Plan to help us understand what worked and what needed to change.
- We prepared a Delivery Agreement which sets out our timetable and how we will engage with people. It is a long process and will take approximately 3½ years to produce.
- We asked landowners, developers and others to suggest new sites for development e.g. for housing.
- We listened to key people from the community and others to find out their views on our challenges, vision, growth levels and where development should go.

We've written a preferred strategy

We want to know what you think. Does this strategy:

- Identify the right challenges for the RLDP to address?
- Provide enough new homes including affordable homes?
- Provide enough new jobs to contribute to economic growth?
- Is growth in the right places?

Next steps

- Write the final plan and check with the public before submitting it to Welsh Government (Autumn 2020).
- The plan is examined by an Inspector at public meetings. After this the Inspector writes a report on our plan (Autumn 2021).
- The Council adopts the plan based on the Inspector's Report (Spring 2022).



Key people from the community told us that these are the main challenges for the plan.



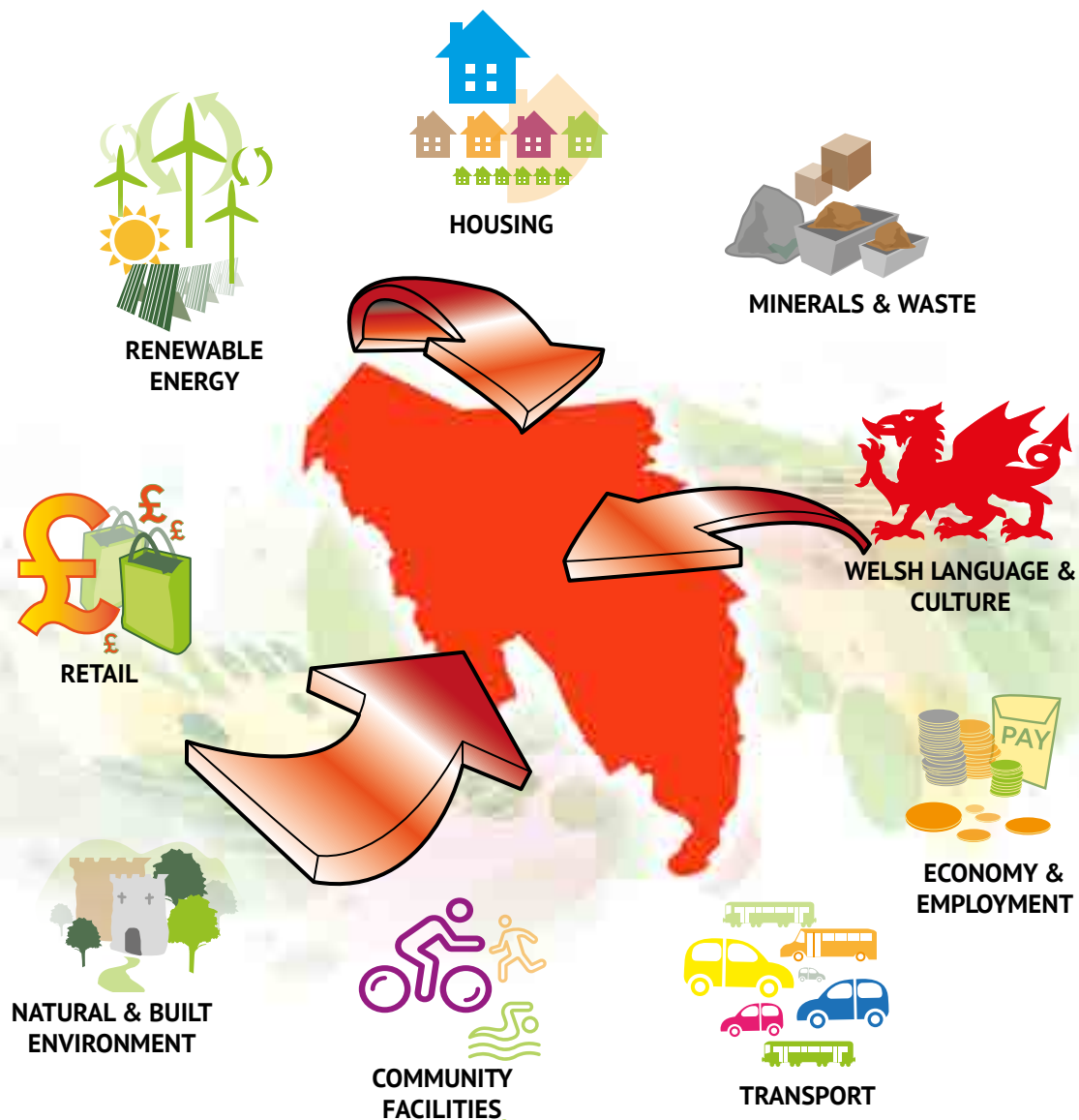
Our vision for Blaenau Gwent

Through collaborative working, by 2033, Blaenau Gwent will become a network of connected sustainable, vibrant valley communities that support the well-being of current and future generations with:

A prosperous low carbon economy where people have the skills, knowledge and opportunities to achieve a better quality of life.

Residents living in well connected, healthy and safe communities, in a range of good quality homes with better access to services.

Its distinctive natural environment, cultural and historic identity is protected and enhanced creating a place where people want to live, work and visit.



How much growth

A preferred strategy option has been developed following engagement with key people of the community.



This plan will look to grow the population by 2% - 2.9%. Resulting in an increase of between 1,471 to 1,996 people.



This plan will provide the land to add between 1,755 to 2,115 new homes including 478 affordable homes. This is at least 117 new homes each year to 2033.

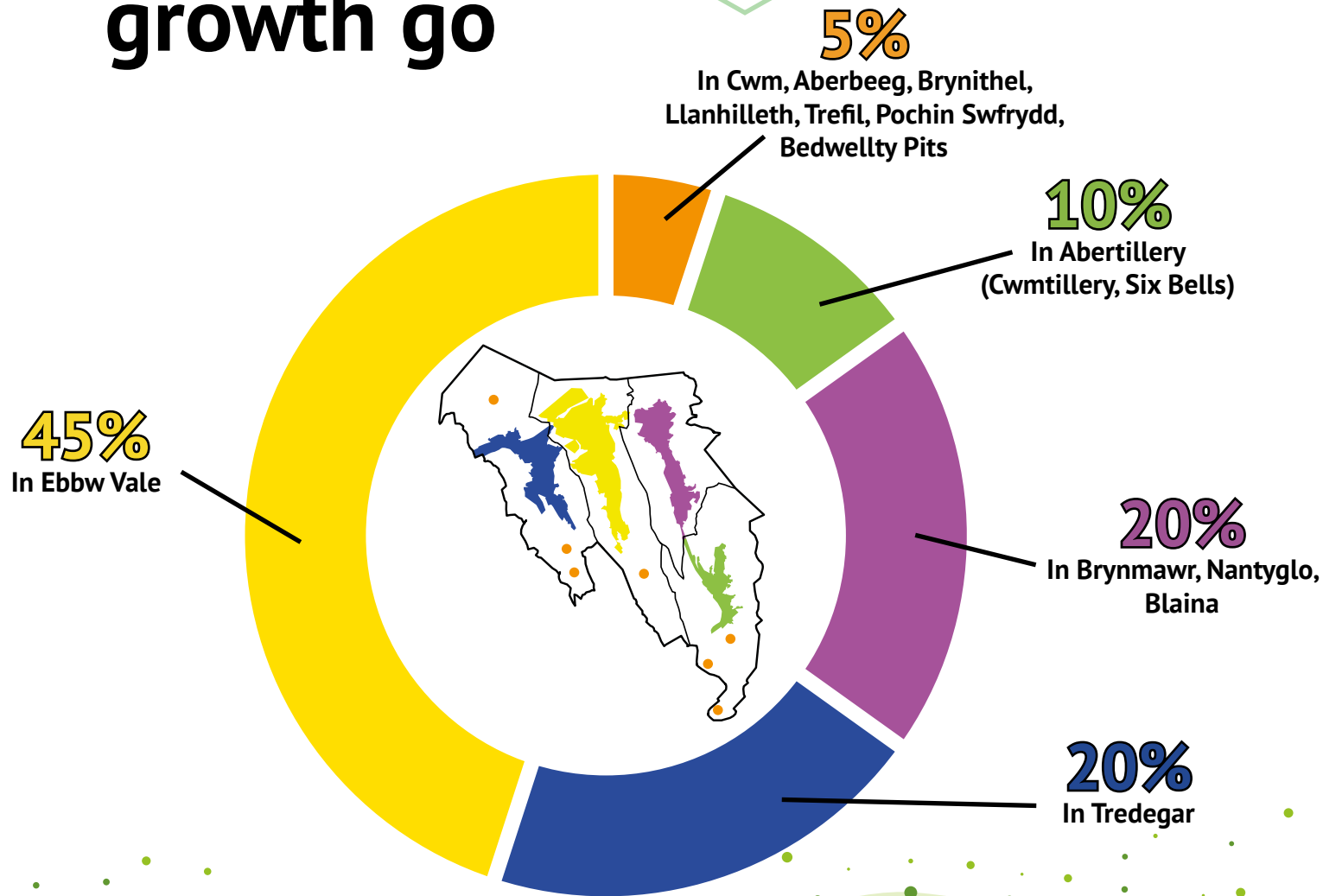


This plan aims to provide the land to add 1,500 to 3,375 new jobs. It will allocate 3-46 hectare of employment land.

The final plan will identify:

- Land for services – schools, health services;
- Land for infrastructure – cycle, walking routes, public transport, roads; and
- Protect green spaces, heritage and culture.

Where will the growth go



There are 3 strategic mixed use sites which we have identified as being important to Blaenau Gwent's growth:

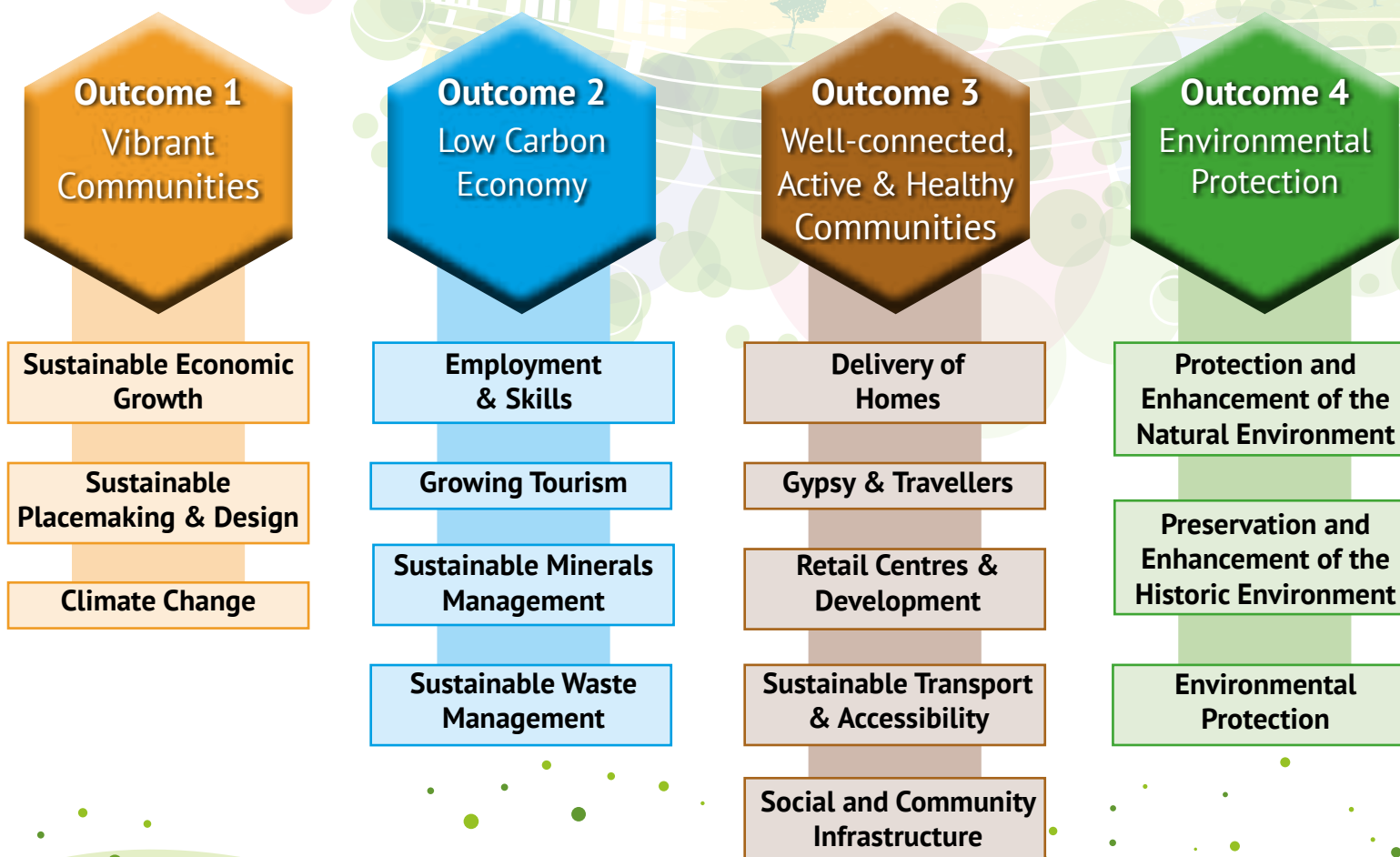
The Works
Ebbw Vale

Ebbw Vale
Northern
Corridor

Former
Nantyglo
Comprehensive
School Site

Delivery

To deliver the vision and objectives we have set out 15 strategic policies around 4 outcomes.



To ensure that our plan is sustainable and that it does not have an impact on protected species the Strategy is supported by an Integrated Sustainable Appraisal and a Habitats Regulation Assessment.

Let us know what you think...

The full Preferred Strategy is available [here](#).

If you want to get involved there will be drop in events in the area.

A six week public consultation will take place from 16th January to 27th February 2020.

Go to the following [link](#) to have your say or look at the supporting documents.



Planning Policy Team

Blaenau Gwent County Borough Council
Municipal Offices, Civic Centre
Ebbw Vale, NP23 6XB

Tel: 01495 354740

Email: planningpolicy@blaenau-gwent.gov.uk

Website: www.blaenau-gwent.gov.uk