

Approx.  
western edge  
of sandstone  
overburden

Photographed  
Dolines

Proposed  
extension  
boundary

Brecon Beacons  
National Park  
boundary

D4

D1

D2

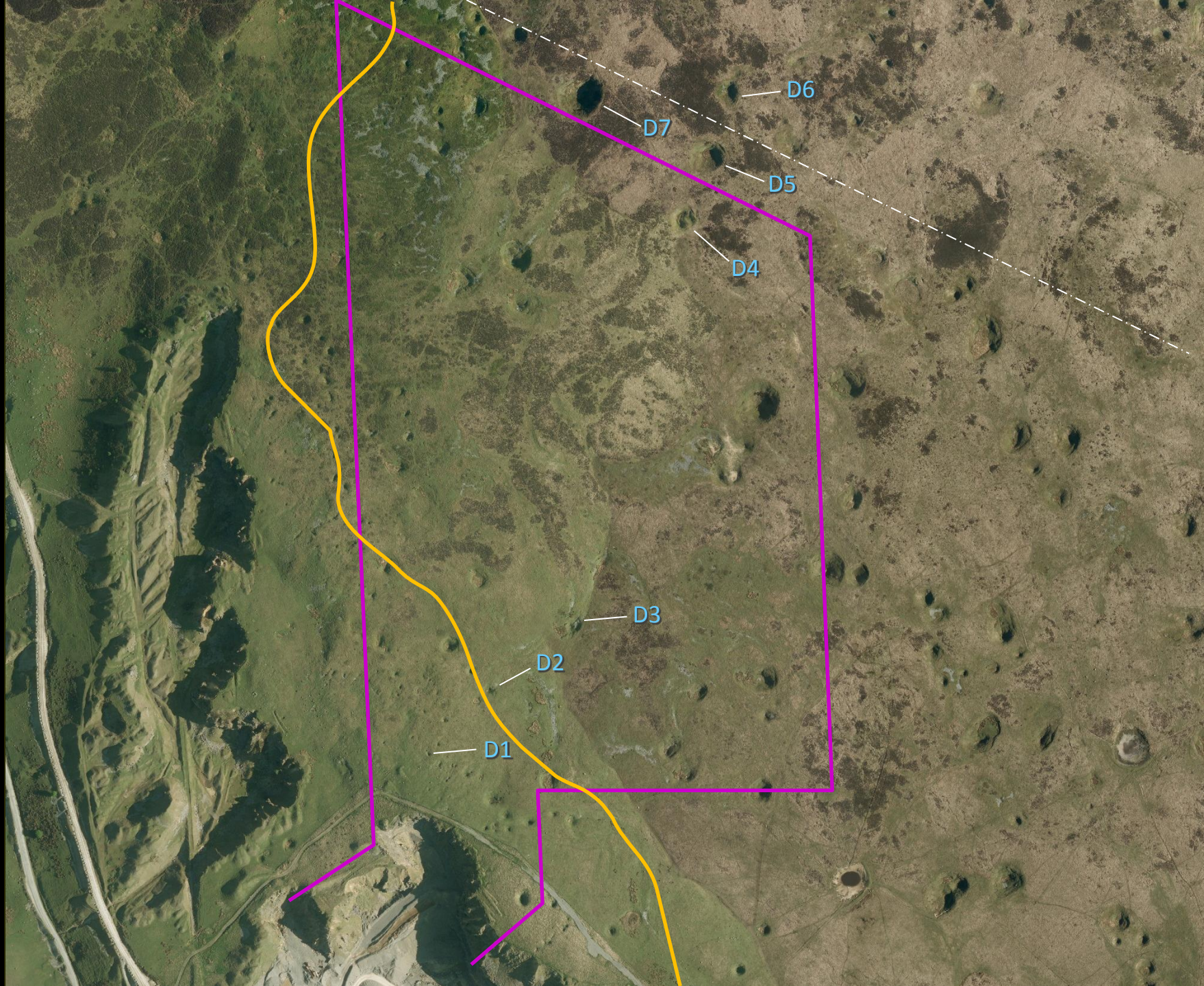
D3

D4

D5

D7

D6



D1 - solution doline on limestone outcrop within Preferred Area



D2 - shallow doline at feather edge of sandstone within Preferred Area



D3 - shallow caprock doline on sandstone outcrop within Preferred Area



D4 - deeper caprock doline on sandstone outcrop within Preferred Area



D5 - deep caprock doline on sandstone outcrop between Preferred Area and National Park



D6 - deep caprock doline on sandstone outcrop just inside the National Park



D7 - very deep caprock doline on sandstone outcrop, just outside Preferred Area with in-situ sandstone exposure,





Area with no obvious dolines in centre of Preferred Area

