



Cyngor Bwrdeisdref Sirol

**Blaenau Gwent**

County Borough Council

# **2013 Air Quality Progress Report for Blaenau Gwent CBC**

**In fulfillment of Part IV of the Environment Act 1995  
Local Air Quality Management**

**Environment & Regeneration Directorate  
Neighbourhood Services Division  
Environmental Health Section**

**Blaenau Gwent County Borough Council**

<b>Local Authority Officer</b>	Tim Griffin
<b>Department</b>	Housing and Environmental Health Section, Pollution Control Team.
<b>Address</b>	Blaenau Gwent CBC, Anvil Court, Church Street, Abertillery, NP13 1DB.
<b>Telephone</b>	01495 355967
<b>e-mail</b>	Tim.Griffin@Blaenau-gwent.gov.uk
<b>Report Reference number</b>	BG.ENVH.AQR.PR.2013
<b>Date</b>	23 <sup>rd</sup> April 2013

## Executive Summary

This progress report is the latest in a series of reports relating to air quality and has been compiled and published by Blaenau Gwent County Borough Council (hereafter referred to as Blaenau Gwent CBC). The report contains the latest air quality data for the calendar year of 2012 applicable to the County Borough, and provides current information relating to any new local developments or issues that may have an impact on air quality.

The UK's National Air Quality Strategy sets air quality objectives for seven key pollutants which Local Authorities are legally required to have regard to. These include Benzene, 1,3 Butadiene, Carbon Monoxide, Lead, Nitrogen Dioxide, Particulate Matter (PM<sub>10</sub>) (gravimetric) and Sulphur Dioxide.

Local authorities are obliged to periodically review the air quality within their area to determine the risk of the air quality objectives set out in the national strategy being exceeded. If a Local Authority identifies a risk of any of the objectives being exceeded within its area then they must proceed to a Detailed Assessment for that pollutant.

The previous reports produced by Blaenau Gwent CBC have concluded that it is unlikely that any of the air quality objectives that the Council are required to have regard to, are being exceeded or will be exceeded within the Borough and therefore no Detailed Assessment for any pollutant has been carried out to-date.

This 2013 Air Quality Progress Report **does not** identify the need for Blaenau Gwent CBC to proceed to a Detailed Assessment for any of the seven pollutants identified in the UK's National Air Quality Strategy.

The next Air Quality Progress Report for the County Borough of Blaenau Gwent is scheduled to be published in April 2014.

Further information regarding the UK's National Air Quality Strategy is available at

<http://www.airquality.co.uk>

# Table of Contents

<b>1</b>	<b>Introduction</b>	<b>5</b>
1.1	Description of Local Authority Area	5
1.2	Purpose of Progress Report	5
1.3	Air Quality Objectives	6
1.4	Summary of Previous Review and Assessments	8
<b>2</b>	<b>New Monitoring Data</b>	<b>10</b>
2.1	Summary of Monitoring Undertaken	10
2.2	Comparison of Monitoring Results with Air Quality Objectives	15
<b>3</b>	<b>New Local Developments</b>	<b>22</b>
3.1	Road Traffic Sources	22
3.2	Other Transport Sources	22
3.3	Industrial Sources	22
3.4	Commercial and Domestic Sources	23
3.5	New Developments with Fugitive or Uncontrolled Sources	23
<b>4</b>	<b>Local / Regional Air Quality Strategy</b>	<b>24</b>
<b>5</b>	<b>Planning Applications</b>	<b>25</b>
<b>6</b>	<b>Air Quality Planning Policies</b>	<b>30</b>
<b>7</b>	<b>Local Transport Plans and Strategies</b>	<b>31</b>
7.1	Regional Transport Plan	31
<b>8</b>	<b>Climate Change Strategies</b>	<b>32</b>
<b>9</b>	<b>Conclusions and Proposed Actions</b>	<b>33</b>
9.1	Conclusions from New Monitoring Data	33
9.2	Conclusions relating to New Local Developments	33
9.3	Other Conclusions	33
9.4	Proposed Actions	33
<b>10</b>	<b>References</b>	<b>34</b>

**List of Tables**

- Table 1.1 Air Quality Objectives
- Table 1.2 Reports Produced by Blaenau Gwent CBC
- Table 2.1.2 Details of Non- Automatic Monitoring Sites for 2012
- Table 2.2 Results Of Nitrogen Dioxide Diffusion Tubes for 2012
- Table 2.3 Results of Nitrogen Dioxide Diffusion Tubes for 2006, 2007, 2008, 2009, 2010, 2011 & 2012.

**List of Figures**

- Figure 1 Measured Levels of Nitrogen Dioxide for 2012 compared with UK AQO
- Figure 2 Measured Levels of Nitrogen Dioxide for 2006, 2007, 2008, 2009, 2010, 2011 & 2012 compared with UK AQO.

**Appendices**

- Appendix 1 Map indicating Administrative Area of Blaenau Gwent
- Appendix 2 Map Indicating Locations of Nitrogen Dioxide Diffusion Tube monitoring within Blaenau Gwent for 2012.
- Appendix 3 Nitrogen Dioxide Diffusion Tube Monitoring Results for 2012.

# 1 Introduction

## 1.1 Description of Local Authority Area

The County Borough of Blaenau Gwent is located in South East Wales and was formerly part of the County of Gwent. It is approximately 20 miles south to the city of Newport, 30 miles south west to the City of Cardiff and directly north is the Brecon Beacons National Park.

Blaenau Gwent is the smallest of all the Welsh Local Authorities, at about 10,900 hectares. There are three distinctive valleys supporting the five main towns or settlements of Abertillery, Brynmawr, Ebbw Vale, Nantyglo and Blaina, and Tredegar.

Although the towns give the County Borough a busy, urban feel, Blaenau Gwent is actually a largely rural area. Forty five per cent of the land area is undeveloped, and the greater part of this is defined as open countryside.

The Borough has witnessed steady population loss over recent years. The most recent figures suggest that there are 68,400 people living in the area. This compares to 70,064 in 2001, and 69,300 in 2010 (Censuses).

The main trunk route that runs through the County Borough is the A465, Heads of the Valleys road which provides good communication to the Midlands and the North via the M50/M5 and to London via the M4.

Much of the traditional coal and steel industry that historically populated the Borough has been replaced by a diverse industrial base comprising of businesses such as pharmaceuticals, battery and computer systems, electronic and high tech engineering companies. The closure of much of the heavy industry in the area has had an adverse impact on the local economy but conversely it has meant the removal of significant sources of air pollution.

Blaenau Gwent has experienced enormous regeneration investment in recent years, with much more to come. Major projects like the re-opening of the Ebbw Valley railway and the re-development of the former Corus steelworks site in Ebbw Vale will transform the face of the borough.

The map provided in Appendix 1 to this report outlines the administrative area of Blaenau Gwent.

## 1.2 Purpose of Progress Report

This report fulfils the requirements of the Local Air Quality Management process as set out in Part IV of the Environment Act (1995), the Air Quality Strategy for England, Scotland, Wales and Northern Ireland 2007 and the relevant Policy and Technical Guidance documents. The LAQM process places an obligation on all local authorities to regularly review and assess air quality in their areas, and to determine whether or not the air quality objectives are likely to be achieved. Where exceedences are considered likely, the local authority must then declare an Air Quality Management Area (AQMA) and prepare an Air

Quality Action Plan (AQAP) setting out the measures it intends to put in place in pursuit of the objectives.

Progress Reports are required in the intervening years between the three-yearly Updating and Screening Assessment reports. Their purpose is to maintain continuity in the Local Air Quality Management process.

They are not intended to be as detailed as Updating and Screening Assessment Reports, or to require as much effort. However, if the Progress Report identifies the risk of exceedence of an Air Quality Objective, the Local Authority (LA) should undertake a Detailed Assessment immediately, and not wait until the next round of Review and Assessment.

### **1.3 Air Quality Objectives**

The air quality objectives applicable to LAQM in **Wales** are set out in the Air Quality (Wales) Regulations 2000, No. 1940 (Wales 138), Air Quality (Amendment) (Wales) Regulations 2002, No 3182 (Wales 298), and are shown in Table 1.1. This table shows the objectives in units of microgrammes per cubic metre  $\mu\text{g}/\text{m}^3$  (milligrammes per cubic metre,  $\text{mg}/\text{m}^3$  for carbon monoxide) with the number of exceedences in each year that are permitted (where applicable).

**Table 1.1 Air Quality Objectives included in Regulations for the purpose of LAQM in Wales**

Pollutant	Air Quality Objective		Date to be achieved by
	Concentration	Measured as	
Benzene	16.25 µg/m <sup>3</sup>	Running annual mean	31.12.2003
	5.00 µg/m <sup>3</sup>	Annual mean	31.12.2010
1,3-Butadiene	2.25 µg/m <sup>3</sup>	Running annual mean	31.12.2003
Carbon monoxide	10 mg/m <sup>3</sup>	Running 8-hour mean	31.12.2003
Lead	0.50 µg/m <sup>3</sup>	Annual mean	31.12.2004
	0.25 µg/m <sup>3</sup>	Annual mean	31.12.2008
Nitrogen dioxide	200 µg/m <sup>3</sup> not to be exceeded more than 18 times a year	1-hour mean	31.12.2005
	40 µg/m <sup>3</sup>	Annual mean	31.12.2005
Particulate Matter (PM <sub>10</sub> ) (gravimetric)	50 µg/m <sup>3</sup> , not to be exceeded more than 35 times a year	24-hour mean	31.12.2004
	40 µg/m <sup>3</sup>	Annual mean	31.12.2004
Sulphur dioxide	350 µg/m <sup>3</sup> , not to be exceeded more than 24 times a year	1-hour mean	31.12.2004
	125 µg/m <sup>3</sup> , not to be exceeded more than 3 times a year	24-hour mean	31.12.2004
	266 µg/m <sup>3</sup> , not to be exceeded more than 35 times a year	15-minute mean	31.12.2005



## 1.4 Summary of Previous Review and Assessments

Table 1.2 provides a comprehensive list of the reports produced by Blaenau Gwent CBC as a result of previous rounds of review and assessment of the air quality within the Borough, and summarises the main findings of each report.

**Table 1.2 - Reports Produced By Blaenau Gwent CBC As A Result Of Previous Rounds Of Local Air Quality Review And Assessment**

<b>Report</b>	<b>Review And Assessment Undertaken &amp; Conclusions</b>	<b>Year Published</b>
<b>1999 First Stage Review and Assessment</b>	Initial screening of industrial, transport and other significant sources of air pollution within the Borough. Concluded that it is unlikely that there will be failure to achieve any of the air quality objectives.	1999
<b>2003 Updating and Screening Assessment</b>	In-depth review of any matters which may have changed since the last review and assessment which may lead to a risk of an air quality objective being exceeded. Concluded no significant changes and therefore unlikely that there will be failure to achieve any of the air quality objectives.	2003
<b>2004 Progress Report</b>	Review of any matters which may have changed since the last review and assessment which may lead to a risk of an air quality objective being exceeded. Concluded no significant changes and therefore unlikely that there will be failure to achieve any of the air quality objectives.	2004
<b>2005 Progress Report</b>	Review of any matters which may have changed since the last review and assessment which may lead to a risk of an air quality objective being exceeded. Concluded no significant changes and therefore unlikely that there will be failure to achieve any of the air quality objectives.	2005
<b>2006 Updating and Screening Assessment</b>	In-depth review of any matters which may have changed since the last review and assessment which may lead to a risk of an air quality objective being exceeded. Concluded no significant changes and therefore unlikely that there will be failure to achieve any of the air quality objectives.	2006
<b>2007 Progress Report</b>	Review of any matters which may have changed since the last review and assessment which may lead to a risk of an air quality objective being exceeded. Concluded no significant changes and therefore unlikely that there will be failure to achieve any of the air quality objectives.	2007
<b>2008 Progress Report</b>	Review of any matters which may have changed since the last review and assessment which may lead to a risk of an air quality objective being exceeded. Concluded no significant changes and therefore unlikely that there will be failure to achieve any of the air quality objectives.	2008
<b>2009 Updating and Screening Assessment</b>	In-depth review of any matters which may have changed since the last review and assessment which may lead to a risk of an air quality objective being exceeded. Concluded no significant changes and therefore unlikely that there will be failure to achieve any of the air quality objectives.	2009

## Blaenau Gwent County Borough Council

<b>2010 Progress Report</b>	Review of any matters which may have changed since the last review and assessment which may lead to a risk of an air quality objective being exceeded. Concluded no significant changes and therefore unlikely that there will be failure to achieve any of the air quality objectives.	2010
<b>2011 Progress Report</b>	Review of any matters which may have changed since the last review and assessment which may lead to a risk of an air quality objective being exceeded. Concluded no significant changes and therefore unlikely that there will be failure to achieve any of the air quality objectives.	2011
<b>2012 Updating and Screening Assessment Report</b>	In-depth review of any matters which may have changed since the last review and assessment which may lead to a risk of an air quality objective being exceeded. Concluded no significant changes and therefore unlikely that there will be failure to achieve any of the air quality objectives.	2012

All reports produced from 2004 onwards are available to download and view free of charge at the Blaenau Gwent CBC website:

<http://www.blaenau-gwent.gov.uk/environment/2774.asp>

Copies of earlier reports are available from Blaenau Gwent CBC Environmental Health Section.

## 2 New Monitoring Data

### 2.1 Summary of Monitoring Undertaken

#### 2.1.1 Automatic Monitoring Sites

Blaenau Gwent CBC does not currently undertake any automatic monitoring of any of the pollutants relevant to the UK National Air Quality Objectives.

However, there was an automatic monitoring station within the Borough which was undertaking monitoring for ambient levels of Lead, PM<sub>10</sub> and PM<sub>2.5</sub> at a special source orientated site. Monitoring was required at the site for a minimum period of 12 months during 2008/09. Monitoring at this site has now completed.

The monitoring station was located at Garnlydan Primary School, Ebbw Vale and was run by Environmental Compliance Ltd on behalf of Envirowales Ltd. Envirowales Ltd is a lead acid battery recycling plant sited at the Rassau Industrial Estate, Ebbw Vale which was given planning permission on 21<sup>st</sup> June 2005.

The provision of the monitoring station arose as a result of compliance with the requirements of a formal agreement between Envirowales Ltd and Blaenau Gwent CBC under Section 106 of the Town and Country Planning Act as previously reported in the 2008 Progress Report (Pg 37/38).

The monitoring site location was selected as it was considered to be one of the nearest sites of relevant exposure to emissions from the processes being undertaken at Envirowales Ltd. A map indicating the location of the monitoring site was provided in Appendix 2 of the 2010 Progress Report.

It was agreed that monitoring would commence at a time when the site had become fully operational and as a result monitoring began in September 2008. The monitoring station was routinely calibrated on a monthly basis, audits of the site were carried out in conjunction with the routine calibration exercises. A summary of the information relevant to the automatic monitoring station was provided in the 2010 Progress Report (Table 2.1).

Reports were provided to the Local Authority by Environmental Compliance Ltd every three months from date of commencement of the monitoring exercise. The outline of the methodology used for monitoring and analysis (including quality assurance and controls used) and the results obtained were provided in each report supplied to Blaenau Gwent CBC. A copy of each of the reports were provided in Appendix 3 of the 2010 Progress Report.

The automatic monitoring undertaken at the site **did not** indicate any exceedence or likely exceedence of the Air Quality Objectives for Lead, PM<sub>10</sub> and PM<sub>2.5</sub> at a level for which a Detailed Assessment would be necessary.

### **2.1.2 Non-Automatic Monitoring Sites**

Blaenau Gwent CBC undertook diffusion tube monitoring at 19 sites throughout the Borough during 2012, the details of which are presented in Table 2.1. A map indicating the approximate location of each current monitoring site is provided in Appendix 2 to this report.

The diffusion tubes are exposed for four week periods in accordance with the National NO<sub>2</sub> exposure calendar.

Cardiff Scientific Services are used to analyse and provide data from all of the NO<sub>2</sub> diffusion tubes within Blaenau Gwent. In recent years we have previously used two laboratories, namely Cardiff Scientific Services and Harwell Scientifics, for the analyse of NO<sub>2</sub> diffusion tubes this was due to an historical arrangement where the four of the nineteen sites namely, BGBC1,3,4 and 9, were originally part of a national survey and the remainder were locally determined monitoring sites. With the demise of the national survey the same arrangements were maintained for a number of years of monitoring, however from the start of 2012 all of the NO<sub>2</sub> diffusion tubes have been analysed by Cardiff Scientific Services.

Cardiff Scientific Services use the 50% TEA in Acetone method to prepare the diffusion tubes for analysis and have indicated that they are following the procedures set out in the Harmonisation Practical Guidance.

It has also been confirmed that Cardiff Scientific Services demonstrated satisfactory performance in both the WASP scheme (run by the Health and Safety Laboratory) and the monthly field inter-comparison exercise run by AEA or own co-location study for the period of 2012.

Blaenau Gwent CBC does not currently undertake a co-location study for its NO<sub>2</sub> diffusion tube monitoring, in previous years the 'National' bias adjustment factor has been used for the results of the monitoring undertaken during each specific year. However at the time of writing this report no 'National' bias adjustment factor was available for Cardiff Scientific Services for 2012, so the results are more conservative than in previous years.

A full audit of all monitoring sites used by Blaenau Gwent CBC was undertaken during 2009 and as a result minor amendments to the descriptors for some of the sites was carried out and some additional information was provided with regards to all sites.

In addition to the above it was identified as a result of the audit that some of the monitoring locations were no longer required as they were no longer representative of the areas being monitored due to local changes. A number of new sites were also identified as a result of the information obtained during the audit and the Updating and Screening Assessment process carried out in 2009.

So that the ongoing monitoring for 2009 would not be interrupted it was decided that the existing sites would continue until the end of the calendar year for 2009. The new

## **Blaenau Gwent County Borough Council**

monitoring locations would commence in January 2010 and the redundant sites would cease monitoring at the end of 2009.

The sites which were made redundant at the end of the calendar year for 2009 were BGBC-10 and BGBC-15. Four new monitoring locations were identified in total and these commenced operation in January 2010. The new sites are BGBC-23, 24, 25 and 26.

Table 2.1.2 Details of Non- Automatic Monitoring Sites for 2012

Site Name	LA Reference	Site Type	Location	Easting (X) / Northing (Y)	OS Grid Map Reference	Pollutants Monitored	Within AQMA?	Relevant Exposure? (Y/N with distance (m) to relevant exposure)	Height between 2 to 4 m? (Y/N)	Distance to kerb of nearest road (N/A if not applicable)	Worst-case Location ?	WAQF Start Date	WAQF End Date
BGBC-01	S1	Near Road	The Darren, Daren-felen Road, Brynmawr	X 319538 Y 211956	SO1911NE	NO <sub>2</sub>	N	Y (on facade)	Y	8m	Y	Jan 1995	N/A
BGBC-03	S3	Urban Background	272 King Street, Brynmawr	X 319292 Y 212030	SO1912SE	NO <sub>2</sub>	N	Y (on façade)	Y	4m	Y	Jan 1995	N/A
BGBC-04	S4	Urban Background	22 Parkhill, Beaufort, Ebbw Vale	X 317298 Y 211287	SO1711SW	NO <sub>2</sub>	N	Y (10m)	Y	N/A	N/A	Jan 1995	N/A
BGBC-05	A3	Urban Background	Willow Tree Bungalow, Aberbeeg	X 321139 Y 201114	SO2101SW	NO <sub>2</sub>	N	Y (1m)	Y	10m	N/A	Jan 1995	N/A
BGBC-07	A1	Urban Background	Aberbeeg Medical Centre, Aberbeeg	X 320942 Y 202011	SO2002SE	NO <sub>2</sub>	N	Y (18m)	Y	25m	N/A	Nov 1995	N/A
BGBC-09	S2	Near Road	Ynys Dawel, Daren-felen Road, Brynmawr	X 319556 Y 211980	SO1911NE	NO <sub>2</sub>	N	Y (7m)	Y	33m	Y	Jan 2001	N/A
BGBC-11	C2	Urban Background	8 Cwm Graig Bungalows, Marine Street, Cwm, Ebbw Vale	X 318785 Y 204592	SO1804NE	NO <sub>2</sub>	N	Y (on facade)	Y	18m	N/A	Jan 2000	N/A
BGBC-13	T2	Roadside	3 Kings Arms Cottages, Trefil, Tredegar	X 312012 Y 212782	SO1212NW	NO <sub>2</sub>	N	Y (on facade)	Y	4m	Y	Oct 2000	N/A
BGBC-16	A5	Near road	49 Aberbeeg Road, Aberbeeg	X 321430 Y 202672	SO2102NW	NO <sub>2</sub>	N	Y (on façade)	Y	7m	Y	Oct 2005	N/A
BGBC-17	C3	Near road	Cwmyrdderch Court, School Terrace, Cwm, Ebbw Vale	X 318429 Y 205535	SO1805NW	NO <sub>2</sub>	N	Y (5m)	Y	7m	Y	Oct 2005	N/A
BGBC-18	BT1	Roadside	Welfare Hall, Beaufort Hill, Ebbw Vale	X 317543 Y 211688	SO1711NE	NO <sub>2</sub>	N	Y (on façade)	Y	5m	Y	Oct 2005	N/A
BGBC-19	BT2	Roadside	42 Beaufort Rise, Ebbw Vale	X 316670 Y 211597	SO1611NE	NO <sub>2</sub>	N	Y (on facade)	Y	3m	Y	Oct 2005	N/A
BGBC-20	TR1	Roadside	122 Beaufort Road, Tredegar	X 314858 Y 210240	SO1410SE	NO <sub>2</sub>	N	Y (on façade)	Y	5.5m	Y	Oct 2005	N/A

Table 2.1.2 Details of Non- Automatic Monitoring Sites for 2012 (continued)

Site Name	LA Reference	Site Type	Location	Easting (X) / Northing (Y)	OS Grid Map Reference	Pollutants Monitored	Within AQMA?	Relevant Exposure? (Y/N with distance (m) to relevant exposure)	Height between 2 to 4 m? (Y/N)	Distance to kerb of nearest road (N/A if not applicable)	Worst-case Location ?	WAQF Start Date	WAQF End Date
BGBC-21	TR2	Other - Nearest residential premises to busy roundabout on Heads of Valley Road (A465)	14 Bryn Rhosyn, Merthyr Road, Tredegar	X 312846 Y 210586	SO1210NE	NO <sub>2</sub>	N	Y (on façade)	Y	35m	Y	Oct 2005	N/A
BGBC-22	BR1	Near road	2 King Street, Brynmawr	X 319562 Y 212128	SO1912SE	NO <sub>2</sub>	N	Y (on façade)	Y	6m	Y	Nov 2005	N/A
BGBC-23	C4	Near road	Cwm Conservative Club, Mill Terrace, Cwm	X 318453 Y 205308	SO1805SW	NO <sub>2</sub>	N	Y (on façade)	Y	6m	Y	Jan 2010	N/A
BGBC-24	T5	Roadside	4 Glen View, Nantybwhch, Tredegar	X 313145 Y 210769	SO1310NW	NO <sub>2</sub>	N	Y (on façade)	Y	5m	Y	Jan 2010	N/A
BGBC-25	E1	Near road	Red Rose Care Centre, Park Road, Ebbw Vale	X 316996 Y 207898	SO1607NE	NO <sub>2</sub>	N	Y (on façade)	Y	8m	Y	Jan 2010	N/A
BGBC-26	E2	Other – near road where this is an increase in traffic expected due to major works nearby	2 The Dingle, Ebbw Vale	X 316980 Y 209842	SO1609NE	NO <sub>2</sub>	N	Y (on façade)	Y	10m	Y	Jan 2010	N/A

## **2.2 Comparison of Monitoring Results with Air Quality Objectives**

### **2.2.1 Nitrogen Dioxide (NO<sub>2</sub>)**

#### **Automatic Monitoring Data**

Blaenau Gwent CBC does not currently undertake any automatic monitoring for Nitrogen Dioxide.

#### **Diffusion Tube Monitoring Data**

A summary of the results obtained from the Nitrogen Dioxide diffusion monitoring undertaken at the 19 sites within the Borough for the period of 2012 is presented in Table 2.2. Full details of the monthly mean values for each site are provided in Appendix 3 to this report.

None of the results from the diffusion tube monitoring are based on triplicate or collocated tubes, the results are based on 12 months worth of data for the calendar year 2012 so none of the data has been annualised.



## Blaenau Gwent County Borough Council

Table 2.2 Results Of Nitrogen Dioxide Diffusion Tubes For 2012

Site Name	Location	Within AQMA?	Data Capture 2012 %	Annual Mean Concentrations	Air Quality Objective Annual Mean for Nitrogen Dioxide ( $\mu\text{g}/\text{m}^3$ )
				2012 ( $\mu\text{g}/\text{m}^3$ ) No bias adjustment factor used	
BGBC-01	The Darren, Daren-felen Road, Brynmawr	N	100	19.1	40
BGBC-03	272 King Street, Brynmawr	N	100	16.1	40
BGBC-04	22 Parkhill, Beaufort, Ebbw Vale	N	100	11.1	40
BGBC-05	Willow Tree Bungalow, Aberbeeg	N	92	15.8	40
BGBC-07	Aberbeeg Medical Centre, Aberbeeg	N	100	17.3	40
BGBC-09	Ynys Dawel, Daren-felen Road, Brynmawr	N	100	19.4	40
BGBC-11	8 Cwm Graig Bungalows, Marine Street, Cwm, Ebbw Vale	N	100	13.7	40
BGBC-13	3 Kings Arms Cottages, Trefil, Tredegar	N	100	7.2	40
BGBC-16	49 Aberbeeg Road, Aberbeeg	N	100	24.8	40
BGBC-17	Cwmyrdderch Court, School Terrace, Cwm, Ebbw Vale	N	100	19.1	40
BGBC-18	Welfare Hall, Beaufort Hill, Ebbw Vale	N	100	22.4	40
BGBC-19	42 Beaufort Rise, Ebbw Vale	N	100	25.7	40
BGBC-20	122 Beaufort Road, Tredegar	N	100	25.8	40
BGBC-21	14 Bryn Rhosyn, Merthyr Road, Tredegar	N	100	18.6	40
BGBC-22	2 King Street, Brynmawr	N	100	19.1	40
BGBC-23	Cwm Conservative Club, Mill Terrace, Cwm	N	100	16.9	40
BGBC-24	4 Glen View, Nantybwhch, Tredegar	N	100	21.8	40
BGBC-25	Red Rose Care Centre, Park Road, Ebbw Vale	N	100	16.7	40
BGBC-26	2 The Dingle, Ebbw Vale	N	100	17.7	40

Figure 1 provides a graphical representation of the 2012 measured levels of Nitrogen Dioxide at each monitoring location in comparison with the Air Quality Objective for this pollutant.

In previous reporting years the 'Nitrogen Dioxide with distance from Roads Calculator' had been used to predict the annual mean Nitrogen Dioxide concentration for receptors that are close to roadside monitoring locations but are further from the kerb than the monitor.

As a result of the audit of the monitoring locations carried out in 2009 it was noted that this calculation would no longer be required at any of the monitoring locations, as all roadside monitors are now located on the facade of the nearest receptor. There are no roadside monitoring locations where the receptor is nearer to the kerb than the monitoring site.

The results provided in Table 2.2 indicate that the Nitrogen Dioxide levels at each of the monitoring sites were considerably below the current Annual Mean Air Quality Objective of 40  $\mu\text{g}/\text{m}^3$ .

Table 2.3 provides a comparison of the results for the period of 2012 with the results of previous years monitoring (where available) for 2006, 2007, 2008, 2009, 2010 and 2011. The results identify that there has been an increase in the measured levels of nitrogen dioxide in 2012 when compared with the 2011 results in seventeen out of the nineteen monitoring locations. The greatest increase in the measured levels of nitrogen dioxide was recorded at BGBC-17 which rose from 16.5  $\mu\text{g}/\text{m}^3$  in 2011 to 19.1  $\mu\text{g}/\text{m}^3$  in 2012.

Only two of the monitoring locations recorded decreases in the measured levels of nitrogen dioxide in 2012, which were BGBC-07 and BGBC-20, when compared to the 2011 results.

Figure 2 provides a graphical representation of the 2006, 2007, 2008, 2009, 2010, 2011 and 2012 measured levels of Nitrogen Dioxide at each monitoring location in comparison with the Air Quality Objective for this pollutant. The 2012 monitoring results show there has been a decrease in the nitrogen dioxide levels at thirteen out of the nineteen monitoring locations when compared to the 2010 monitoring results. The 2012 monitoring results also identify that there has been an increase in the measured levels of nitrogen dioxide at ten out of the 15 monitoring locations when compared to the 2009 monitoring results.

The bias adjustment factors used for each year are as per the information provided in each corresponding report for the year produced by Blaenau Gwent CBC and which are available at:

<http://www.blaenau-gwent.gov.uk/environment/2774.asp>

Please note that the monitoring results for 2012 have not been adjusted for bias as there was not a bias adjustment factor available to be used at the time of writing this report.

Figure 1: Measured levels of Nitrogen Dioxide for 2012 compared with UK AQO

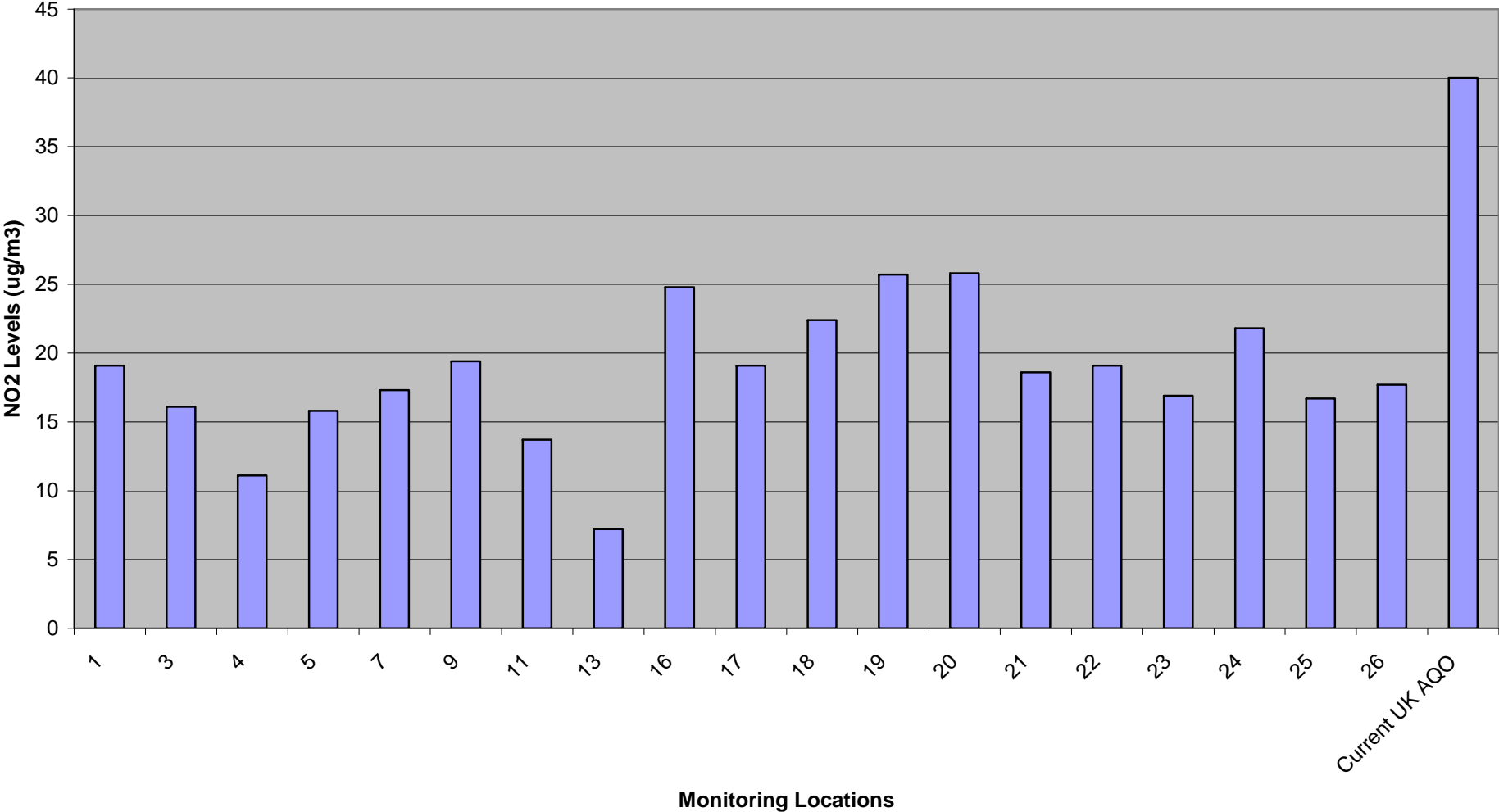
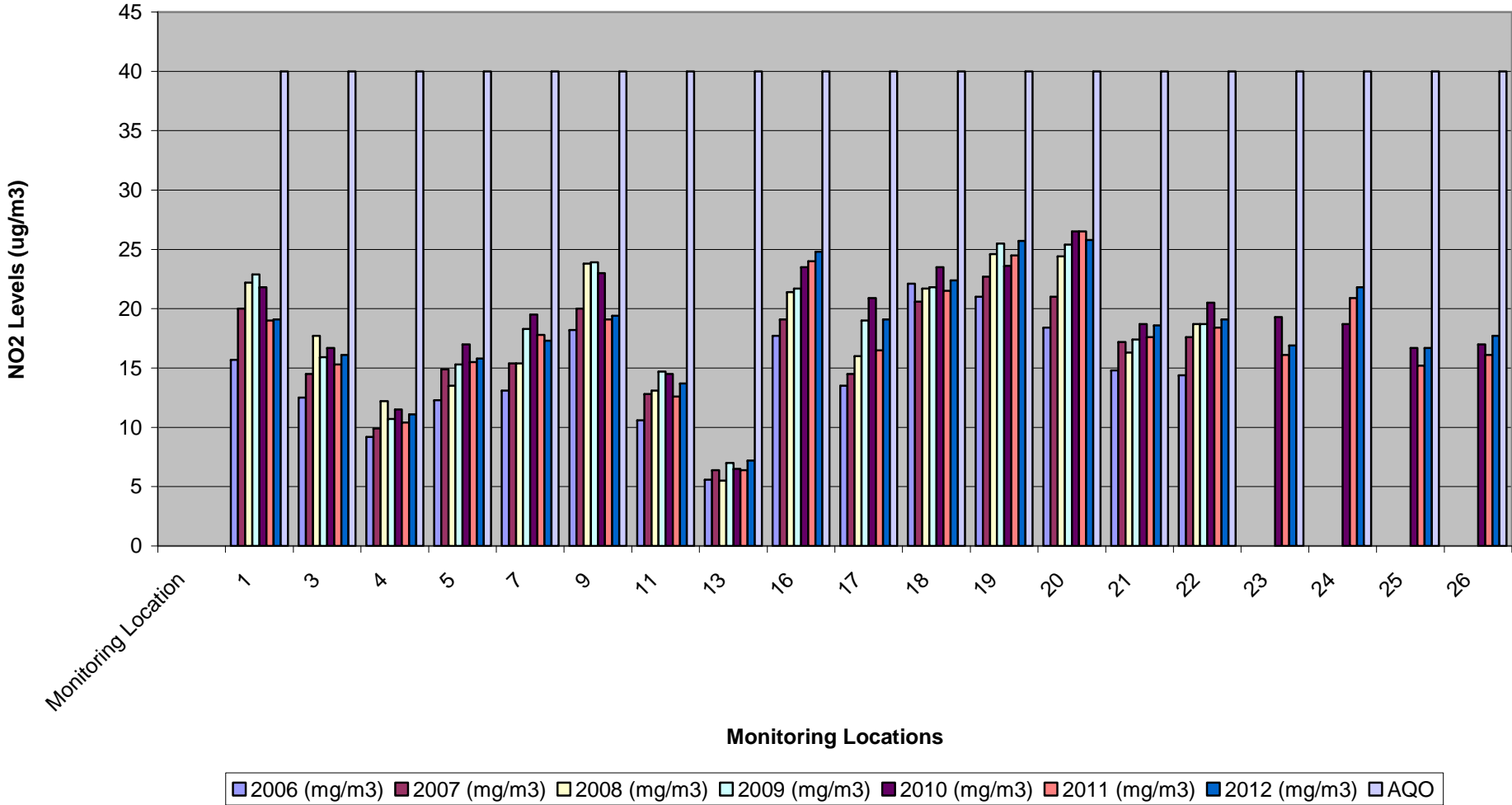


Figure 2: Measured levels of Nitrogen Dioxide for 2006,2007,2008, 2009,2010, 2011 & 2012 compared with UK AQO



**Blaenau Gwent County Borough Council**

**Table 2.3 Results of Nitrogen Dioxide Diffusion Tubes for 2006, 2007, 2008, 2009, 2010, 2011 & 2012.**

Site Name	Annual Mean Concentrations						
	2006 ( $\mu\text{g}/\text{m}^3$ ) Adjusted for bias (0.78)	2007 ( $\mu\text{g}/\text{m}^3$ ) Adjusted for bias (0.84 & 0.82)	2008 ( $\mu\text{g}/\text{m}^3$ ) Adjusted for bias (0.79 & 0.86)	2009 ( $\mu\text{g}/\text{m}^3$ ) Adjusted for bias (0.81 & 0.84)	2010 ( $\mu\text{g}/\text{m}^3$ ) Adjusted for bias (0.85)	2011 ( $\mu\text{g}/\text{m}^3$ ) Adjusted for bias (0.82)	2012 ( $\mu\text{g}/\text{m}^3$ ) Not Adjusted for bias
BGBC-01	15.7	20.0	22.2	22.9	21.8	19	19.1
BGBC-03	12.5	14.5	17.7	15.9	16.7	15.3	16.1
BGBC-04	9.2	9.9	12.2	10.7	11.5	10.4	11.1
BGBC-05	12.3	14.9	13.5	15.3	17.0	15.5	15.8
BGBC-07	13.1	15.4	15.4	18.3	19.5	17.8	17.3
BGBC-09	18.2	20.0	23.8	23.9	23.0	19.1	19.4
BGBC-11	10.6	12.8	13.1	14.7	14.5	12.6	13.7
BGBC-13	5.6	6.4	5.5	7.0	6.5	6.4	7.2
BGBC-16	17.7	19.1	21.4	21.7	23.5	24	24.8
BGBC-17	13.5	14.5	16.0	19.0	20.9	16.5	19.1
BGBC-18	22.1	20.6	21.7	21.8	23.5	21.5	22.4
BGBC-19	21.0	22.7	24.6	25.5	23.6	24.5	25.7
BGBC-20	18.4	21.0	24.4	25.4	26.5	26.5	25.8
BGBC-21	14.8	17.2	16.3	17.4	18.7	17.6	18.6
BGBC-22	14.4	17.6	18.7	18.7	20.5	18.4	19.1
BGBC-23	n/a	n/a	n/a	n/a	19.3	16.1	16.9
BGBC-24	n/a	n/a	n/a	n/a	18.7	20.9	21.8
BGBC-25	n/a	n/a	n/a	n/a	16.7	15.2	16.7
BGBC-26	n/a	n/a	n/a	n/a	17	16.1	17.7

### **2.2.1 Particulate Matter (PM<sub>10</sub>)**

No new monitoring was undertaken for PM<sub>10</sub> during 2012.

The results obtained from the Automatic Monitoring Station which was located at Garnlydan Primary School obtained during 2009 and which were reported in the 2010 Progress Report remains the most recent information available.

In summary the results that were reported from the above monitoring exercise undertaken during 2009 indicated that the annual mean of 16.3µg/m<sup>3</sup> for PM<sub>10</sub> was well below the annual mean National Air Quality Objective of 40µg/m<sup>3</sup>.

### **2.2.2 Sulphur Dioxide (SO<sub>2</sub>)**

Blaenau Gwent CBC does not currently undertake any monitoring for Sulphur Dioxide.

### **2.2.3 Benzene**

Blaenau Gwent CBC does not currently undertake any monitoring for Benzene.

### **2.2.4 Other Pollutants Monitored**

Blaenau Gwent CBC does not currently undertake any monitoring for any other pollutants.

### **2.2.5 Summary of Compliance with AQS Objectives**

Blaenau Gwent has examined the results from monitoring in the borough. Concentrations are all below the objectives, therefore there is no need to proceed to a Detailed Assessment.

## **3 New Local Developments**

Blaenau Gwent CBC confirms there are no new local developments within the local authority area that may affect air quality.

### **3.1 Road Traffic Sources**

Blaenau Gwent CBC confirms that there are no new/ newly identified narrow congested streets with residential properties close to the kerb or busy streets where people may spend one hour or more close to traffic. Also there are no new/newly identified roads with high flows of buses and/or HGVs.

Blaenau Gwent CBC confirms that there are no new/newly identified busy junctions or roads with significantly changed traffic flows within the local authority area. Also there are no new bus stations within the local authority area.

Construction works have begun on the A465 Heads of the Valleys Road, Section 3 Brynmawr to Tredegar, Dualling scheme. The scheme has been reported previously in the 2012 Air Quality Updating & Screening Assessment Report for Blaenau Gwent CBC.

### **3.2 Other Transport Sources**

Blaenau Gwent CBC confirms there are no airports or ports within the local authority area. Also there are no locations where diesel or steam trains are regularly stationary for periods of 15 minutes or more, with potential for relevant exposure within 15m. Blaenau Gwent CBC also confirms that there are no locations with a large number of movements of diesel locomotives, and long term relevant exposure within 30m.

### **3.3 Industrial Sources**

Blaenau Gwent CBC confirms that there are no new or proposed industrial installations for which an air quality assessment has been carried out and there are no existing industrial installations where emissions have increased substantially or new relevant exposure has been introduced. Blaenau Gwent CBC also confirms that there are no new or significantly changed installations with no previous air quality assessment within the local authority area.

It should be noted however that whilst there have been no new industrial installations during 2012 for which an Air Quality Assessment would have been required, there have been a number of new businesses which have required an environmental permit from either Blaenau Gwent CBC or the Environment Agency. None of the new

installations have been assessed as being likely to have a significant impact on the air quality within the Borough either individually or as a result of the cumulative impact of emissions.

A list of the current Part A1, A2 and Part B processes within the Borough previously regulated under the Pollution Prevention (England and Wales) Regulations 2000 (as amended) and the Environmental Permitting (England and Wales) Regulations 2007 (as amended), and which are now regulated under the Environmental Permitting (England and Wales) Regulations 2010 (as amended) was provided in this appendices of the 2011 Progress Report. There have been no significant changes to any of the existing Part A1, A2 and B processes since the 2011 Progress Report that would be likely to have a significant impact on air quality.

Blaenau Gwent CBC confirms that there are no major fuel (petrol) storage depots, no new petrol stations or no poultry farms within the local authority area.

### **3.4 Commercial and Domestic Sources**

Blaenau Gwent CBC confirms that there are no biomass combustion plant and there are no areas of significant domestic solid fuel burning within the local authority area.

### **3.5 New Developments with Fugitive or Uncontrolled Sources**

Blaenau Gwent CBC confirms that there no new potential sources of fugitive or uncontrolled particulate matter, new landfill sites, quarries, unmade haulage roads on industrial sites within the local authority area.

Blaenau Gwent CBC confirms that there are no new or newly identified local developments which may have an impact on air quality within the Local Authority area.

Blaenau Gwent CBC confirms that all the following have been considered:

- **Road traffic sources**
- **Other transport sources**
- **Industrial sources**
- **Commercial and domestic sources**
- **New developments with fugitive or uncontrolled sources.**



## **4 Local / Regional Air Quality Strategy**

### **4.1 Local Air Quality Management Strategy**

Blaenau Gwent CBC produced a Departmental Air Pollution Control Policy and Procedure document in 2007 to facilitate the management of Air Quality with the Borough. A copy of the Air Pollution Control Policy and Procedure Document was provided in Appendix 5 of the 2011 Air Quality Progress Report.

It has been identified that in light of current changes to national guidance regarding Air Quality Management the Policy and Procedure document requires some revision and it is hoped that this work will be undertaken within 2013 in conjunction with other Departments within Blaenau Gwent CBC to produce a more strategic and overarching strategy for the management of Air Quality within the Borough.

### **4.2 Regional Air Quality Management Strategy**

Blaenau Gwent CBC actively participates in the work of the Welsh Air Quality Forum which assists in co-ordinating the management of Air Quality at an all Wales level amongst the 22 Local Authorities and other partners.

Further information regarding the work of the Welsh Air Quality Forum is available at

<http://www.welshairquality.co.uk/>

## 5 Planning Applications

### 5.1 Planning Consultation Policy

Each week a list of new planning applications that are received by the Planning Division is provided to the Pollution Control Team within the Environmental Health Department. The Pollution Control Team then examines the applications that have been received and requests further details in relation to any applications that may have the potential to impact of local air quality.

Consultation with the Planning Applicant and the Planning Division will take place for any developments that are identified as having the potential to have a significant impact on air quality. The applicant may then be required to submit an Environmental Impact Assessment or an air quality assessment as necessary prior to any planning permission being granted.

### 5.2 New Planning Applications

Each planning application is judged on its merits and due regard is given to the Planning Policy Wales document regarding Air Quality published by the Welsh Assembly Government, and other relevant guidance.

A copy of Blaenau Gwent CBC Unitary Development Plan (UDP) and further information regarding the planning process within Blaenau Gwent and the Local Authorities policies regarding land use and development control is available at <http://www.blaenau-gwent.gov.uk/business/7725.asp>

A link to the Local Development Plan (LDP) is also available at the above website.

The Planning Division classify applications that are received into minor and major developments in accordance with the Welsh Office Planning Statistics guidance. Major developments are classified as being the following:

- major dwelling is 10 or more dwellings or if an outline application 0.5 hectares
- For other types of applications major equates to 1000m<sup>2</sup> floor area or 1 hectare if the application is in outline

Table 3.1 below provides a breakdown of the major applications that were received and approved during 2012 and comments in relation to potential impact on air quality with Blaenau Gwent.

**Blaenau Gwent County Borough Council**

**Table 3.1: Applications For Major Developments Received And Approved During 2012**

<b>Planning Reference</b>	<b>Type of development</b>	<b>Location</b>	<b>Potential Impact on Local Air Quality</b>
C/2007/0730	Residential development (outline planning permission)	BKF Plastics Limited Ashvale Works Fair View Tredegar.	Negligible
C/2010/0269	Residential development	Land at Bryn Serth Road Ebbw Vale	Negligible
C/2010/0342	Residential development (outline planning permission)	Plot 1, Gwastod Farm Church Lane Abertillery	Negligible
C/2010/0384	Residential development (outline planning permission)	Land at Six Bells Road Abertillery	Negligible
C/2010/0405	Residential development	Plot 2 Big Lane Ebbw Vale	Negligible
C/2011/0009	Residential development	Land adjoining Church Farm St Illtyds Abertillery	Negligible
C/2011/0098	Residential development (reserved matters approved)	Land adjacent to Old Dol- Y-Garn Farm Dol-Y-Garn Terrace Blaina	Negligible
C/2011/0267	Residential development (outline planning permission)	Plot of Land at Heathfield Tredegar	Negligible
C/2011/0283	Residential development	Land adjacent to Fulford Ashville Tredegar	Negligible
C/2011/0299	Residential development (reserved matters application)	Land Adjoining Vale Terrace Chapel	Negligible
C/2011/0307	Residential development (renewal of planning permission)	Plot 5 White House Farm Beaufort	Negligible
C/2011/0308	Residential development (renewal of outline planning permission.)	Brynithel Builders Merchants, Penrhiw Quarry Brynithel Terrace Abertillery	Negligible
C/2011/0315	Residential development (variation)	4 (Plot 2A) Woodland Walk Blaina	Negligible
C/2011/0332	Residential development	Graig House Nant-y-croft	Negligible

## Blaenau Gwent County Borough Council

		Ebbw Vale	
C/2011/0352	Residential development- Change of use from commercial to domestic.	106 Arail Street Abertillery	Negligible
C/2011/0363	Residential development- Conversion of house into 5 flats.	55 Beaufort Street Brynmawr	Negligible
C/2011/0364	Residential development (retention application approved)	Oak Road (Glyn Milwr II) Blaina	Negligible
C/2011/0368	Residential development (conversion of chapel into domestic property)	Former Presbyterian Chapel Chapel Road Abertillery	Negligible
C/2012/0004	Residential development	New Road Nantyglo	Negligible
C/2012/0005	Residential development (renewal of outline planning permission)	Land at Nante Farm Road Abertillery	Negligible
C/2012/0017	Residential development	Greenland Road Brynmawr	Negligible
C/2012/0019	Residential development	Land at Factory Road Brynmawr	Negligible
C/2012/0029	Residential development	Reservoir Road Ebbw Vale	Negligible
C/2012/0037	Residential development (Conversion of public house into 3 houses)	Bailey Arms School Terrace Ebbw Vale	Negligible
C/2012/0041	Residential development (Outline planning permission)	Garden of Kismet The Rhyd Tredegar	Negligible
C/2012/0049	Residential development (Conversion of commercial unit into a domestic property)	Forge Lane Blaina	Negligible
C/2012/0056	Residential development	Saw Mill Yard Nantyglo	Negligible
C/2012/0082	Residential development	Hospital Road Nantyglo	Negligible
C/2012/0088	Residential development	Tillery Street Abertillery	Negligible
C/2012/0101	Residential development	Old Dol-Y-Garn Farm Dol-Y-Garn Terrace Blaina	Negligible
C/2012/0113	Residential development	Calach Row Porters Road Nantyglo	Negligible
C/2012/0124	Residential development	Plot 2 Gwastod Farm	Negligible

## Blaenau Gwent County Borough Council

		Cwmtillery, Abertillery	
C/2012/0135	Residential development	Plot on land adjoining Barham House Badminton Grove Ebbw Vale	Negligible
C/2012/0136	Residential development	Land adjoining Tafarn Ty Uchaf Trefil Road Tredegar	Negligible
C/2012/0144	Commercial development	Site of Former Lefray Factory Glandwr Industrial Estate Abertillery	Negligible
C/2012/0147	Residential development	Church Street Ebbw Vale	Negligible
C/2012/0221	Residential development	Land Adjoining The Kings Arms Newchurch Road Ebbw Vale	Negligible
C/2012/0230	Residential development (change of use from commercial offices to a domestic property)	Carmel Street Abertillery	Negligible
C/2012/0235	Residential development	Oak Road, Tanglewood Abertillery	Negligible
C/2012/0243	Commercial development	Festival Park Outlet Victoria Ebbw Vale	Negligible
C/2012/0357	Residential development	Castle Street Tredegar	Negligible
CON/2011/002	Commercial development- 3 wind turbine generators	Land to the north of Bedlinog Farm Bedlinog	Negligible

No applications for any mineral developments or landfill developments were received by BGCBC during the period of 2012.

### **5.3 Major Planning Applications 2013**

Two major planning applications have been received by Blaenau Gwent CBC in 2013 that might have an impact on local air quality which will be reported in detail in the 2014 Air Quality Progress Report.

The first application is a combined heat and power project at unit 21 Rassau Industrial Estate, Ebbw Vale, Blaenau Gwent. The project includes a biomass plant comprising of a gasification unit and compression engines, which will use prepared virgin wood that would be chipped off site.

The second application is for the Circuit of Wales, Rassau, Ebbw Vale which is a race track designed to host international motor sport events such as motor GP world superbikes. In addition to the main race circuit there will be a technology park for research and development in the automotive sector, a karting and motor cross track, industrial units and hotels and leisure facilities.

Air quality assessments have been required for both sites.

## **6 Air Quality Planning Policies**

Blaenau Gwent CBC does not have a specific air quality planning policy however it is outlined as a development management policy within the Local Development Plan that 'the proposal does not result in airborne emissions which have an unacceptable effect on the health, amenity or natural environment of the surrounding area, taking into account cumulative effects of other proposed or existing sources of air pollution in the vicinity.'

Over the next 12 months the environmental health section and planning section of Blaenau Gwent CBC will be working together to produce supplementary planning guidance for developers for air quality.

## **7 Local Transport Plans and Strategies**

### **7.1 Regional Transport Plan**

Local Authorities are no longer required to develop and produce Local Transport Plans; they are now required to work with neighbouring Authorities to produce Regional Transport Plans in order to promote efficient and effective services.

The first Regional Transport Plan which includes Blaenau Gwent has been developed and published and can be viewed at the following website:

<http://www.sewta.gov.uk/strategy.htm>

The final version of the document was submitted to the Welsh Assembly on the 30<sup>th</sup> September 2009. This document is a five year plan considering both local and regional transport networks.

Part of the process of the development of the Regional Transport Plan requires the production of a Strategic Environmental Assessment (SEA) which will give consideration to air quality issues.

The Strategic Environmental Assessment Baseline Study Report and Scoping Report are also available at the above website.



## **8 Climate Change Strategies**

### **8.1 Corporate Energy Policy**

As part of its commitment to corporate contribution towards the reduction of greenhouse gases emissions from all its activities and as part of the Climate Change programme Blaenau Gwent CBC has developed an Energy Policy to ensure the effective and efficient use and management of energy.

The Energy Policy compliments the seven core values of the Councils Community plan and contributes to the overall strategic aims of the Local Authority.

At present the Energy Policy is not available on the Blaenau Gwent CBC website and the document currently subject to ongoing review.

A copy of the current document will be made available to the Welsh Assembly Government on request and it is envisaged that upon the finalisation of the review of the current policy and its subsequent publication this document will be made available on the Blaenau Gwent CBC website.

## **9 Conclusions and Proposed Actions**

### **9.1 Conclusions from New Monitoring Data**

Blaenau Gwent CBC has examined the results from monitoring in the Borough of Blaenau Gwent for the period of 2012. Concentrations are all below the relevant UK National Air Quality Objectives.

### **9.2 Conclusions relating to New Local Developments**

Blaenau Gwent CBC has assessed all new or significantly changed sources in the Borough and relevant new or significantly changes sources in nearby Local Authority areas and has concluded that it is unlikely that the impact of these will result in a potential exceedance of any of the UK National Air Quality Objectives within the Borough.

### **9.3 Other Conclusions**

This report has not identified the need to proceed to a Detailed Assessment for any pollutant relevant to the UK National Air Quality Objectives.

### **9.4 Proposed Actions**

Blaenau Gwent CBC will continue to monitor for Nitrogen Dioxide subject to the continuous review and assessment of the existing monitoring sites. Monitoring for the calendar year of 2013 will be carried out at all monitoring locations identified in Table 2.1.2 of this report.

It is proposed that the results of monitoring carried out during the calendar year of 2013 will be presented in the 2014 Air Quality Progress Report which will be prepared as part of the Updating and Screening Assessment process.

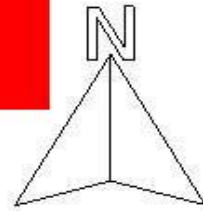
## 10 References

- Blaenau Gwent CBC, (1999), 1999 First Stage Review and Assessment, <http://www.blaenau-gwent.gov.uk/environment/2774.asp>
- Blaenau Gwent CBC, (2003), 2003 Updating and Screening Assessment, <http://www.blaenau-gwent.gov.uk/environment/2774.asp>
- Blaenau Gwent CBC, (2004), 2004 Progress Report, <http://www.blaenau-gwent.gov.uk/environment/2774.asp>
- Blaenau Gwent CBC, (2005), 2005 Progress Report, <http://www.blaenau-gwent.gov.uk/environment/2774.asp>
- Blaenau Gwent CBC, (2006), 2006 Updating and Screening Assessment, <http://www.blaenau-gwent.gov.uk/environment/2774.asp>
- Blaenau Gwent CBC, (2007), 2007 Progress Report, <http://www.blaenau-gwent.gov.uk/environment/2774.asp>
- Blaenau Gwent CBC, (2008), 2008 Progress Report, <http://www.blaenau-gwent.gov.uk/environment/2774.asp>
- Blaenau Gwent CBC, (2009), 2009 Updating and Screening Assessment, <http://www.blaenau-gwent.gov.uk/environment/2774.asp>
- Blaenau Gwent CBC, (2010), 2010 Progress Report, <http://www.blaenau-gwent.gov.uk/environment/2774.asp>
- Blaenau Gwent CBC, (2011) 2011 Progress Report, <http://www.blaenau-gwent.gov.uk/environment/2774.asp>
- Capita Symonds, (2011), Travel In Greater Gwent 2010 – Summary Report, Capita Symonds, Cwmbran.
- DEFRA, (2009), Local Air Quality Management - Technical Guidance LAQM.TG(09), DEFRA.
- Air Quality Review and Assessment Helpdesk Website, <http://laqm.defra.gov.uk/>
- Nitrogen Dioxide Diffusion Tube Precision Results for Laboratories. <http://laqm.defra.gov.uk/diffusion-tubes/precision.html>
- WASP Scheme results for Laboratory- <http://laqm.defra.gov.uk/diffusion-tubes/ga-gc-framework.html>

# Appendices

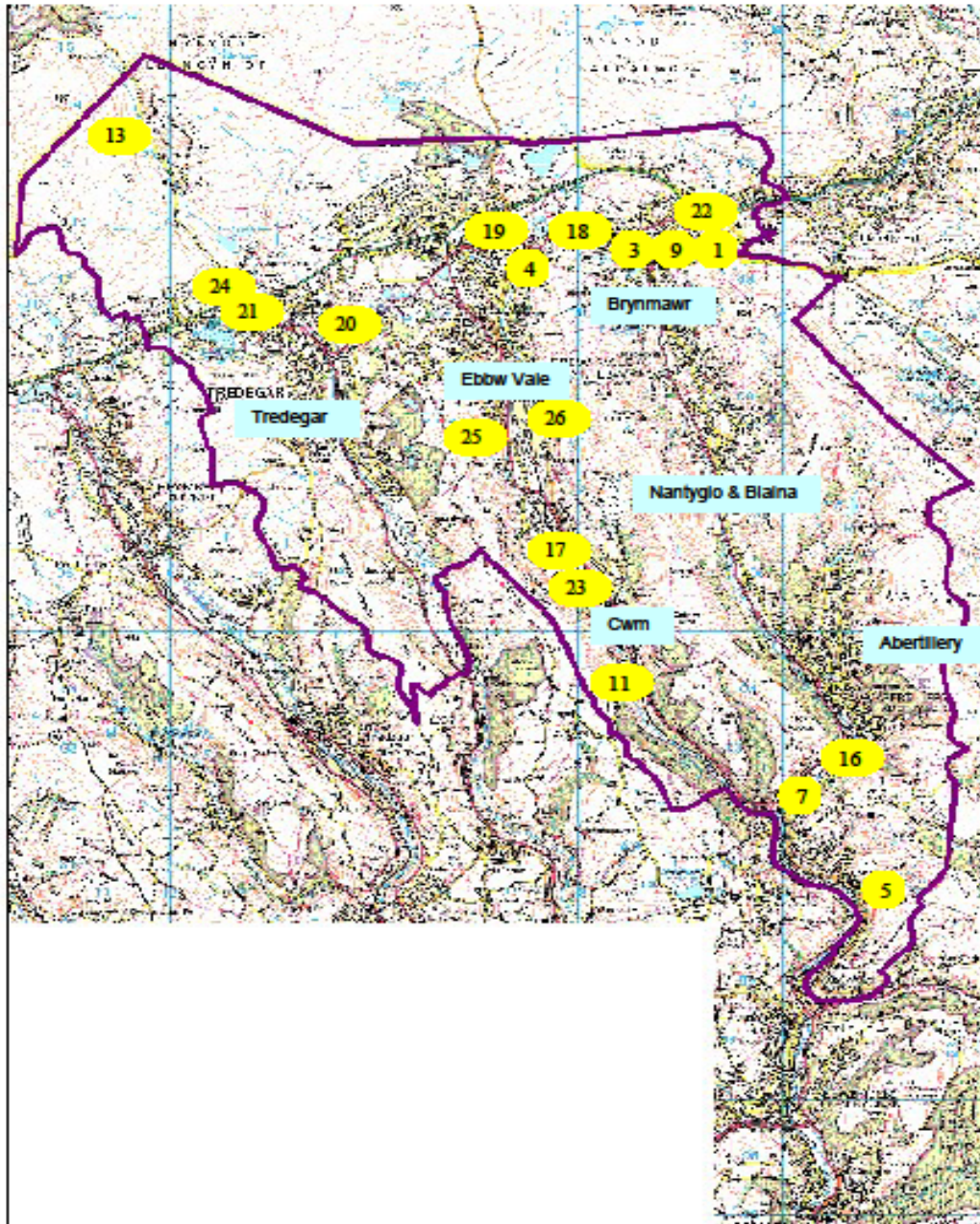
# Appendix 1

## Administrative Area of Blaenau Gwent



# Appendix 2

## Location of NO<sub>2</sub> Monitoring Sites within Blaenau Gwent 2012



# Appendix 3

## NO<sub>2</sub> Diffusion Tube Monitoring Monthly Mean Values 2012

SITE	04/01-01/02	01/02-29/02	29/02-28/03	28/03-25/04	25/04-30/05	30/05-27/06	27/06-01/08	01/08-29/08	29/08-26/09	26/09-02/11	02/11-28/11	28/11-02/01	Annual Mean
BGBC- 007	24	23	20	16	11	2	11	15	15	21	22	27	17.3
BGBC- 005	20	21	18	15	10	10	10	**	13	16	19	22	15.8
BGBC -011	16	18	17	13	9	9	10	11	11	15	18	17	13.7
BGBC -013	10	9	9	5	5	5	4	7	4	9	10	9	7.2
BGBC -016	31	29	27	22	15	21	21	21	23	27	30	31	24.8
BGBC -017	22	19	23	19	15	14	11	17	16	22	26	25	19.1
BGBC -018	26	27	28	18	18	14	16	17	18	27	32	28	22.4
BGBC -019	28	29	30	20	19	21	22	29	21	30	29	30	25.7
BGBC -020	28	27	30	20	24	25	23	26	21	28	31	26	25.8
BGBC -021	22	23	25	17	12	12	13	17	19	19	22	22	18.6
BGBC -022	26	19	23	15	17	14	13	17	15	20	24	26	19.1
BGBC -023	17	20	20	14	11	18	12	15	12	19	24	21	16.9
BGBC -024	22	25	26	14	11	19	19	24	21	27	30	24	21.8
BGBC -025	19	16	23	13	13	14	14	16	14	19	20	19	16.7
BGBC 026	22	23	22	15	11	13	10	14	13	18	25	26	17.7
BGBC -001	21	20	24	17	16	16	13	20	16	22	23	21	19.1
BGBC -009	22	20	25	17	17	18	13	20	15	21	25	20	19.4
BGBC -003	20	19	21	15	12	11	9	12	12	19	22	21	16.1
BGBC -004	15	15	13	8	7	8	7	9	8	13	16	14	11.1

\*\* Missing tube